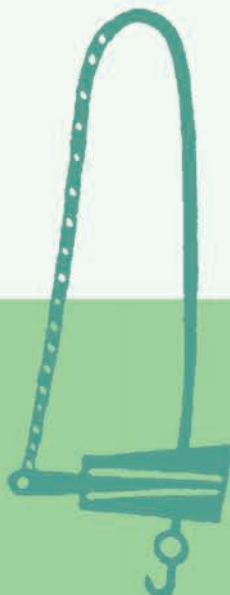
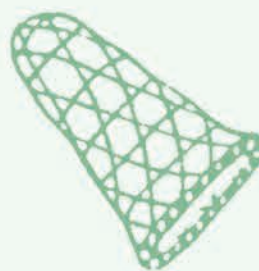
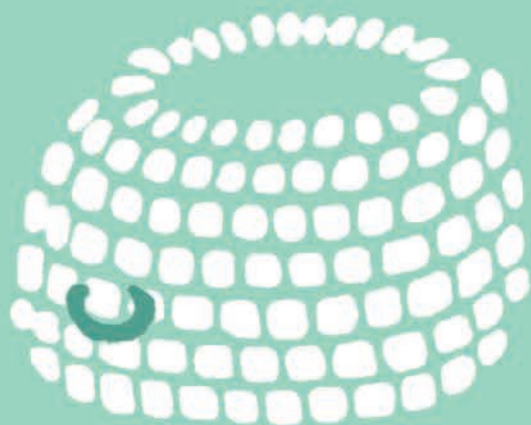




**INSTITUTE FOR THE STUDY  
OF JAPANESE FOLK CULTURE**  
KANAGAWA UNIVERSITY

2021—2023

Commemorative Issue for the Centennial



# Centennial of the Founding of the Institute for the Study of Japanese Folk Culture

On February 2, 1921, Keizo Shibusawa, the founder of this Institute, and six others, including Jun Suzuki and Akira Miyamoto, held the first meeting of the Attic Museum Society (the predecessor of this Institute) in their hometown of Tokyo. On the same day in 2021, the Institute celebrated its Centennial.

The “Institute for the Study of Japanese Folk Culture Centennial Commemorative Project” will be held for a 5 year period starting in the milestone year of 2021—the Centennial year of the Institute for the Study of Japanese Folk Culture—during which time commemorative projects have been scheduled, including relevant symposia and commemorative publications.



Inside the Attic Museum  
Catalog no. 河1-6-14

## Contents

<b>Institute for the Study of Japanese Folk Culture</b> .....1
Members of ISJFC
Centennial of the Founding of the ISJFC
Activities and Projects
<b>Research</b> .....5
<b>Exhibitions</b> .....7
<b>Courses</b> .....8
Folk Cultural Studies Seminar ( <i>Jomin Bunka Kenkyu Koza</i> )
Practical Training Workshop for Restoration of Historical Documents
<i>Mingu</i> Forum
<b>Holdings</b> .....9
Collection of Historical Documents and Cultural Materials
Library Collection
Searching our Collection
<b>Publications</b> .....11
<i>Rekishi to Minzoku</i> (History and Folk Customs)
<i>Mingu Monthly</i>
Monographs, Research Reports, Catalogues, etc.
<b>International Center for Folk Culture Studies</b> .....13

## Official Social Media of the Institute for the Study of Japanese Folk Culture

### Facebook

<https://www.facebook.com/jomin.kanagawa.univ/>

### Twitter

[https://twitter.com/jomin\\_official/](https://twitter.com/jomin_official/)

### YouTube

<https://www.youtube.com/channel/UCbYukzC1LpryLpOiHnn07mg/>

## The Latest Information is Available on the ISJFC Website

### ISJFC

<http://jominken.kanagawa-u.ac.jp/en/>

### The Research Center for Nonwritten Cultural Materials

<http://himoji.kanagawa-u.ac.jp/english/>

### International Center for Folk Culture Studies

<http://icfcs.kanagawa-u.ac.jp/en/>

### Kanagawa University Digital Archive

<https://www.kanagawa-u.ac.jp/research/digitalarchive/>

## Message

### Toward the Next 100 years of the ISJFC

In the 100 years since its foundation as the Attic Museum in 1921, the Institute for the Study of Japanese Folk Culture has not taken an easy path. In 1939, for instance, there was a severe decline in the museum functions of the Attic after the *mingu* collection was transferred to the Museum of Ethnology in Hoya. However, the Institute has been operating as a research facility at Kanagawa University since 1981, and in 2008 the Research Center for Nonwritten Cultural Materials was established within the ISJFC to carry on the work of the COE Program. Moreover, in 2009, the International Center for Folk Culture Studies was launched as a hub for joint research and shared use based out of the ISJFC.

Today, as its first century comes to an end, the ISJFC has begun to carry out specific activities based on future plans for the next century. One of these activities is to enhance the functions of the International Center for Folk Culture Studies in its existing role as a hub for joint research and shared use. As an organization for the study of folk culture from an international perspective, we are proactively organizing joint research and planning the shared use of our collected materials and documents. Thus, to carry out cutting-edge interdisciplinary studies, joint research at the ISJFC is now split into three categories: Core Joint Research Projects, which are promoted as Institute-wide activities; Basic Joint Research Projects for the proactive use of collected materials; and Topical Joint Research Projects, which are based on the interests of individual researchers.

In addition, another activity is the enhancement of the Institute's function as a museum. The aim is for the facility to become a university museum that newly integrates museum studies. The ISJFC will serve as a hub for the transmission of research results from joint studies and shared use as well as a center for university education and curator training. Precisely because of the Institute's function as a museum, we can promote research approaches that are positioned as integrated museum studies.

**YASUMURO Satoru**

Director

Institute for the Study of Japanese Folk Culture  
Kanagawa University





The Institute for the Study of Japanese Folk Culture (ISJFC) is an academic research institute attached to Kanagawa University that carries out research on the lives, cultures, and history of the Japanese people in a wide variety of domains.

This institute was founded in 1921 by businessman Keizo Shibusawa, as the “Attic Museum Society,” in order to advance research on the lives and cultures of people from various regions of Japan, with a focus on *mingu* (folk implements) and the history of fisheries. The institute was renamed the ISJFC in the period surrounding the cessation of the war, and was later invited to become a part of Kanagawa University.

In 2021, the institute celebrates 100 years since its founding. Embracing Keizo Shibusawa’s perspective of “harmonious development,” the institute—as an open institute—provides a variety of research opportunities including participation in research exchanges both inside and outside the university. In addition, the institute offers educational activities related to relevant fields of research.



## Keizo Shibusawa and the Attic Museum



Keizo Shibusawa (1896-1963) was born as a grandson of entrepreneur Eiichi Shibusawa. He served as the Governor of the Bank of Japan during the Second World War and Minister of Finance in the early postwar years. He was interested in the history of *jomin*, and in 1921 built the “Attic Museum” in the roof space of his garden shed to store and exhibit his collection of traditional toys and *mingu*. A number of fellow researchers joined him in advancing *mingu* studies, provincial studies or research on the history of fisheries. The spirit of “harmonious development” advocated by Keizo Shibusawa continues to the present day.

## Organization Structure



(The Japanese Fiscal Year (FY) and Academic Year (AY) both start on April 1 and continue until March 31. For the purpose of this guide all references to years will be prefaced by FY regardless of whether they are fiscal or academic.)

## Cooperation with Graduate School and Curator Course

### Graduate School of History and Folklore Studies, Kanagawa University

Kanagawa University Graduate School of History and Folklore Studies is an educational arm of the ISJFC. Here, education and research activities are carried out in close relation with the ISJFC and the Research Center for Nonwritten Cultural Materials.

### Curator Course

The ISJFC also supports the operation of the Curator Course, which provides basic and practical training on collecting, compiling, studying, and exhibiting materials at museums to develop curators specializing in the handling of *mingu* and historical documents.

## The Department of History and Folklore Studies in the Faculty of Cross-Cultural and Japanese Studies was established in April 2020

The new Department of History and Folklore Studies is grounded in the traditions of the Institute for the Study of Japanese Folk Culture and systematically linked to the existing program of the Graduate School of History and Folklore Studies. Its programs facilitate students' learning in “history” by exploring changes of the times from antiquity to the contemporary Japan, “folklore studies” by investigating the customs and beliefs of various regions of Japan through field research, and “culture vitalization” by deploying these cultural resources for regional revitalization projects and tourism.

The new Minato Mirai Campus was opened in April 2021.



Minato Mirai Campus

## Members of ISJFC

[KEY]

Name (Position)

I : Title II : Degree III : Area of Expertise \*As of October 2021

\*The degree section is included only for members with a Ph.D.

### DOYO Daisuke

I : Associate Professor, Faculty of Business Administration,  
Kanagawa University II : Ph.D. in Engineering  
III: Industrial Engineering, Digital Fabrication

### HIRAI Makoto

I : Professor, Faculty of Human Sciences, Kanagawa University  
II : Ph.D  
III: Human Geography, Regional Geography

### HIRAYAMA Noboru

I : Associate Professor, Faculty of Cross-Cultural and Japanese  
Studies, Kanagawa University  
II : Ph.D III : History of Modern Japan

### HIROTA Ritsuko

I : Professor, Faculty of Business Administration, Kanagawa  
University II : Ph.D  
III: Chinese Ritual Ceremonies, Chinese Ritual Performing  
Arts, Chinese Folklore

### KINOSHITA Naoyuki

I : Project Professor, Faculty of Cross-Cultural and Japanese  
Studies, Kanagawa University  
III: History of Arts in Japan, Museology, Cultural Resources  
Studies

### KON Masaaki (Executive Board Member)

I : Project Professor, Faculty of Cross-Cultural and Japanese  
Studies, Kanagawa University  
III: Folklore, History of Boats and Ships

### KURUSHIMA Noriko

I : Professor, Faculty of Cross-Cultural and Japanese Studies,  
Kanagawa University  
III: Japanese History

### MAEDA Yoshihiko

I : Professor, Faculty of Cross-Cultural and Japanese Studies,  
Kanagawa University  
III: Ancient Japanese History

### MARUYAMA Yasuaki

I : Associate Professor, Faculty of Cross-Cultural and Japanese  
Studies, Kanagawa University  
II : Ph.D III : Folklore

### OKAWA Hiromu

I : Associate Professor, Faculty of Cross-Cultural and Japanese  
Studies, Kanagawa University  
II : Ph.D III : Modern Japanese History

### OGUMA Makoto (Executive Board Member)

I : Professor, Faculty of Cross-Cultural and Japanese Studies,  
Kanagawa University  
II : Ph.D III : Folklore, Comparative Cultural Studies

### ONODERA Atsushi

I : Project Professor, Faculty of Cross-Cultural and Japanese  
Studies, Kanagawa University  
II : Ph.D III : Historical Geography, Map History

### SEKIGUCHI Hiroo (Executive Board Member)

I : Associate Professor, Faculty of Cross-Cultural and Japanese  
Studies, Kanagawa University  
II : Ph.D III : Early Modern Japanese History

### SENSUI Hidekazu (Executive Board Member)

I : Professor, Faculty of Business Administration, Kanagawa  
University  
II : DPhil III : Social Anthropology

### SHIITADA Atsushi

I : Professor, Faculty of Cross-Cultural and Japanese Studies,  
Kanagawa University  
II : Ph.D III : Modern Japanese History, History of Ryukyu

### SUNAMI Soichiro

I : Associate Professor, Faculty of Cross-Cultural and Japanese  
Studies, Kanagawa University II : Ph.D  
III : Buddhist Folklore, Material Culture Studies

### SUZAKI Fumiyo

I : Assistant Professor, Faculty of Engineering, Kanagawa  
University II : Ph.D  
III: History of Housing, History of Kitchens, History of Modern  
Architecture

### TAKAGI Ryo

I : Professor, Faculty of Business Administration, Kanagawa  
University II : Ph.D  
III: Cultural Anthropology, Southeast Asian (Thai) Studies

### UCHIDA Seizo

I : Professor, Faculty of Engineering, Kanagawa University  
II : Ph.D  
III: History of Japanese Architecture

### YAMAMOTO Shino

I : Professor, Faculty of Cross-Cultural and Japanese Studies,  
Kanagawa University  
II : Ph.D III : Folklore, Travel Culture

### YASUMURO Satoru (Director)

I : Professor, Faculty of Cross-Cultural and Japanese Studies,  
Kanagawa University  
II : Ph.D  
III: Folklore (Subsistence Folklore, Environment), Material Culture

### ZHOU Xing

I : Professor, Faculty of Cross-Cultural and Japanese Studies,  
Kanagawa University  
II : Ph.D III : Chinese Folklore, Chinese Cultural Anthropology

● Please refer to our website for the latest information.

# Centennial of the Founding of the ISJFC

In 2021, the Institute for the Study of Japanese Folk Culture at Kanagawa University celebrates 100 years since its establishment.

When the Institute first started, it was a small museum located in the garden-shed attic of the home of Keizo Shibusawa (1896–1963), who was still a student at the Tokyo Imperial University at the time, where he and his friends displayed biological specimens and folk toys. In May 1921, when he was preparing to graduate from university, Shibusawa founded the “Attic Museum Society” with his friends as a club-like association for academic research.

During his spare time from work, Shibusawa took a personal interest in passionately pursuing genuine academic study from his home attic that would contribute to humankind around the world. While working at a bank, Shibusawa used the attic museum as a base to conduct research into history and folk studies with regard to the everyday culture of “*jomin*” or common people. Finally, the Attic Museum left the attic and was relocated to a dedicated building on the Shibusawa premises. Young university graduates were employed as researchers who conducted studies and gathered and published documents.

The Attic Museum was renamed the Institute for the Study of Japanese Folk Culture in 1942. After the death of Shibusawa in 1963, the Institute for the Study of Japanese Folk Culture continued its activities as a private research facility; in 1981, it was invited to become part of Kanagawa University. With the Institute as its nucleus, the Graduate School of History and Folklore Studies was established in 1993 to provide postgraduate education. The students who studied at the graduate school are conducting research at universities and museums in Japan and internationally. In 2020, the Department of History and Folklore Studies of the Faculty of Cross-Cultural and Japanese Studies was established to provide undergraduate education. Beginning in an attic, the Institute has grown from a base for domestic Japanese researchers to a research and educational facility that conducts collaborations with international researchers where not only Japanese students but also overseas students come to study.

For a 5-year period between 2021 and 2025, the Centennial Years, the Institute for the Study of Japanese Folk Culture at Kanagawa University will be holding a course of lectures commemorating its 100-year history and issuing publications such as a Centennial Commemorative Collection of Essays, with the aim of looking back at the history of the Institute as it grew and forward to the next 100 years.

● Please refer to the website for a detailed history of the Institute.



Attic Museum (Late 1920s) Catalog no. 写4-1-7-2



People with *mingu* at the Attic Museum  
Catalog no. 7-78-12



New Attic Museum building (completed in 1933)  
Catalog no. 河1-6-15



Organizing historical documents at the Institute for the Study of Japanese Folk Culture Tsukishima Branch Office (Early 1950s)



3rd *mingu* research course held at Keio University (1976)



Looking over historical documents in Oku-Noto, Ishikawa Prefecture (1989)



## 1. Publication of Research Findings



23rd Forum: Folk Cultural Studies Seminar / International Research Forum (December 2019)

Research findings are continually publicized through various publications, seminars, workshops, or databases and other information on the ISJFC website.

## 2. Collection of Historical Documents

Historical documents collected during field survey are compiled and catalogued with the cooperation of the owners.

The compilation and cataloguing of ISJFC's own collections is also in progress.

## 3. Institute Seminars

Occasional seminars have been held since 1983 to share research findings among the members of the Institute. External specialists are also invited to read their papers. Open to public. A total of 126 sessions have been held as of June 2021.



120th The Society for ISJFC Research Seminar (September 2019)

## 4. Joint Projects with Other Institutions

ISJFC collaborates with various institutions in different regions and different research fields.

- Yokohama History Museum, Wajima City Board of Education (Ishikawa), Miyake Municipal Board of Education, Japan Fisheries Research and Education Agency, the Society for *Mingu* of Japan

## 5. Academic Exchange

### ● Academic Exchange Agreements

ISJFC conducts academic exchange with the following international institutions to enhance mutual understanding and cooperation in folk culture studies:

- School of Cultural Resources, Taipei National University of the Arts (March 28, 2020)
- National Museum of Ethnology (March 26, 2020)

- Institute of Oceanic Culture, National Taiwan Ocean University, Taiwan (June 28, 2017)
- China Marine Culture Research Center, Zhejiang Ocean University, China (May 25, 2016)
- Center of Japanese Studies, University of Sao Paulo, Brazil (April 1, 2012)
- Institute of Korean Cultural Heritage, Chung-Ang University, South Korea (July 14, 2012)
- Institution for Marine and Island Cultures (MIC), Mokpo National University, South Korea (April 1, 2011)
- Youngnam Culture Institute, Kyungpook National University, South Korea (December 28, 2009)
- Institute for Maritime Culture, Pukyong National University, South Korea (December 25, 2009)
- Institute of Oceanic Culture, Ocean University of China, China (November 24, 2009)
- Ocean Culture and Economic Research Center, Shanghai Ocean University, China (November 20, 2009)

### ● East Asia Island and Ocean Forum

The East Asian Island and Ocean Forum was launched in 2012 with research institutions in Korea, China and Japan. The host institution rotates annually among the three countries.

In FY 2019, the 7th “Deployment and Exchanges of the Humanities Network in the Sea Region” forum was held at Pukyong National University in Busan, South Korea.

### ● Network of Five University Institutes

Aspiring to advance the achievements and philosophy of the three great scholars in the field of folklore studies, Kunio Yanagita, Shinobu Orikuchi, and Keizo Shibusawa, the following five university institutes have formed a network and held occasional research meetings since 2008.

- Institute of Folklore Studies, Seijo University
- The Memorial Institute of Dr. Orikuchi, Kokugakuin University
- Community Research Institute, Aichi University
- Anthropological Institute, Nanzan University
- Institute for the Study of Japanese Folk Culture, Kanagawa University

## 6. Research Center for Nonwritten Cultural Materials

Research Center for Nonwritten Cultural Materials was established and attached to the Institute to develop the 21st Century COE Program “Systematization of Nonwritten Cultural Materials for the Study of Human Society.” With the focus on the forms of human activity that are not expressed by the written word, the Center is dedicated to the study and collection of nonwritten cultural materials. The Center put particular effort into the dissemination of knowledge of the nonwritten cultural materials to the international research community.

## 7. International Center for Folk Culture Studies

The International Center for Folk Culture Studies is a hub for international joint research.

In the age of globalization, ICFCS seeks the coexistence of diverse cultures by establishing a methodology for research on everyday life of the ordinary people.

The activities of the organization will come to an end in FY 2021. (Refer to page 13 for details)

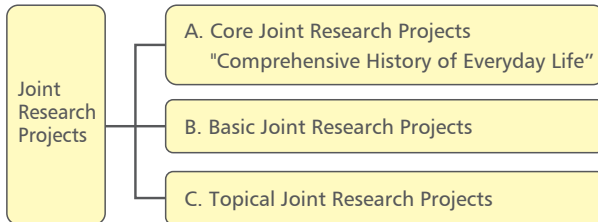


## Aims and Overview

### 1. Joint Research Projects

At present, the ISJFC is carrying out several academic research projects that relate to the following three categories.

#### • Joint Research Categories



### A. Core Joint Research Projects

#### "Comprehensive History of Everyday Life"

Pioneering and interdisciplinary joint research projects are carried out by researchers as a team from medium- and long-term perspectives. Research is promoted through the collection and processing of materials acquired in field studies based on the themes of everyday life centering on daily necessities (primarily food, clothing and housing).

### B. Basic Joint Research Projects

Medium- and long-term joint research projects are carried out based on materials held by the ISJFC, leading to enhanced museum functionality, which is a basic policy of the ISJFC.

### C. Topical Joint Research Projects

These projects are based on individual topics from medium- and short-term perspectives, which are positioned as formative joint studies that might become core and basic research projects in the future.

Progress in the joint research projects is shared on the website and via social media. The research results are published in essay collections, research reports, and academic paper collections and transmitted through research lectures, research report sessions, and symposia related to folk culture.

### 2. *Mingu* Studies

Research focusing on the relation of *mingu* and local history. Findings are shared through the publication of "*Mingu Monthly*."

### 3. The Management of Documents and *Mingu*

Research on overall management (including compilation, recording, repair, preservation and maintenance) of historical documents and *mingu*.

Furthermore, catalogs of the historical documents owned by the ISJFC are issued regularly, and these collected materials are made available as study resources.

### 4. The History of the Attic Museum and the ISJFC

Research on past activities and research materials of the Attic Museum and the ISJFC.

## A. Core Joint Research Projects "Comprehensive History of Everyday Life"

"Nichijo-Sahan (nothing out of the ordinary)":

What Japanese people have historically been eating

Duration: 2020- Project Leader: ZHOU Xing

#### [Geographical scope]

Japan and elsewhere in East Asia (China, South Korea, and Taiwan)

#### [Purpose]

In this study, conventionally accepted theories on Japanese food culture are reconsidered in light of diversifying food habits, whereby the consumption of meat exceeds that of fish while rice consumption is in decline, and the wider food culture, which includes not only ingredients but also table manners and tableware, is understood as being representative of a culture that is "nothing out of the ordinary." Of course, as with sake compared to tea, there are points of contrast in food culture that can be perceived as being either common or uncommon.



Sasazushi from Tomikura, Iiyama City (photograph by Satoru Yasumuro)

### General Research on Weaving and Uses of Clothes

Duration: 2019- Project Leader: KON Masaaki

#### [Geographical scope]

The specific geographical scope of the project has not been established. However, for the time being, the research has been conducted within Japan.



Cloth woven from various materials, including Japanese linden and wisteria (owned by ISJFC)

#### [Purpose]

This is a comprehensive study of how threads of various materials were made into cloth and how such cloth was put to use. Cloth is primarily used for garments, but it has many other uses, and the materials that are needed to make it vary according to the intended use. The purpose of the present study is to comprehensively examine how usage was impacted by differences in the characteristics of the cloth depending on the material.

### The History and Folklore of the Toilet

Duration: 2019- Project Leader: SUZAKI Fumiyo

#### [Research Subject]

Toilet Space, Equipment, Treatment of Excrement, and Hygiene in Historical Materials and Excavated Structures in Japan and Overseas

#### [Purpose]

This is a comprehensive study of the history and folklore of toilets and the treatment of excrement, primarily from the perspectives of historical studies, folklore studies, and architecture. Specifically, by (1) collecting and organizing relevant historical materials, (2) conducting historical studies of remains in Japan and other countries, and (3) holding lectures by specialists in related fields such as sociology and geology, as well as the fields listed above, a composite investigation is conducted from the perspectives of various fields, regions, and eras.

Educational Poster Describing the Introduction of Flush Toilets in the Taisho Period "Let's Get Familiar with Cultural Facilities" (Poster from 1919 <Taisho 8> for the Lifestyle Improvement Exhibition by the Ministry of Education; Source: National Museum of Nature and Science, Tokyo)





## B. Basic Joint Research Projects

### The Development of Field Sciences in Japan: Reflections from the Institute for the Study of Japanese Folk Culture Archive Materials



Attic Film Screening at the Paiwan Studies Historical Workshop (Parirayan Village, Dashe, Sandimen Township, Pingtung County, Taiwan/October 26, 2018)

Duration: 2016- Project Leader: SENSUI Hidekazu

#### [Geographical scope]

The locations where research was conducted by the Shibusawa Foundation for Ethnological Studies (*Minzokugaku Shinko Kai*) and the Attic Museum.

#### [Purpose]

This is a joint research project based on materials passed on to the Institute from the Shibusawa Foundation for Ethnological Studies, along with the Attic Museum's photographs and films. In particular, the project will conduct follow-up surveys and collect information associated with previous research. It will coordinate the effective use of the materials between the institutions possessing these materials of the same origin. Through these efforts we aim to establish a fresh view of the development of field sciences in Japan.

### History and Folk Culture of Futagami Island with Particular Focus on Futagami Family

Duration: from 2016- Project Leader: MAEDA Yoshihiko

#### [Geographical scope]

Futagami-jima Island, Matsuyama City, Ehime Prefecture

#### [Purpose]

We are attempting a new approach to the history and folk culture of Futagami Island, which has been the long term focus of ISJFC research activities.

1. Examine documents on the Futagami Family in the Awai district, Matsuyama City, and reveal multiple aspects of the family's activities in the Middle Ages.



"Yuri-jima Island" Records on Yuri-jima Island compiled by Shinshiroaneaki Futagami

2. Make further progress in organizing and interpreting documents pertaining to the Futagami Family in the Early Modern Age to provide a better understanding of the activities of the family during this period.
3. Investigate and analyze the activities of the Society for the Study of the Futagami Family Record and reveal its social significance.

### Comprehensive Studies on the Landscape and History of Sea Areas and Seaside Communities

Duration: 2015- Project Leader: YASUMURO Satoru

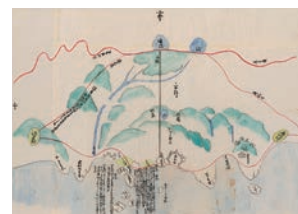
#### [Geographical scope]

The coastal villages and their fishing grounds depicted on the fishing grounds maps possessed by the ISJFC.

#### [Purpose]

The main purpose of this joint project is to conduct interdisciplinary research on the history and culture of sea areas and seaside communities based on the landscape depicted in the illustrated fishing ground maps and by utilizing the human resources of the ISJFC.

The expected outcomes include fieldwork, joint research groups, collected papers, digitized and cataloged fishing grounds maps, and the publication of the aforementioned as study resources.



Fukami Village and Kaiso Village (now Wajima City) Fishing Ground Maps

### Pioneering New Domains Through Comprehensive Research Study of Porto Namban Byobu Folding Screens

Duration: 2020- Project Leader: SEKIGUCHI Hiroo

#### [Geographical scope]

Porto City (Portugal) and others

#### [Purpose]

The purpose of the present study is to conduct a comprehensive documentary investigation of the texts found in the Evora Folding Screens (replicas to be acquired by the University) and Porto Namban Folding Screen under layer sheets (located in the Museu Nacional de Soares dos Reis in Porto, Portugal).

The study will advance the digitization and cataloging of these historical Portuguese folding screen texts.



Preliminary investigation of under layer sheet texts (January 2020)

\*This study is supported by JSPS KAKENHI Grant Number 21K18119 (July 9, 2021, to March 31, 2024).

## C. Topical Joint Research Project

### Research on the History and Folklore Materials in Digital Fabrication Era



Artificial Wood Prototype from a Historical Document

Duration: 2020- Project Leader: SEKIGUCHI Hiroo

#### [Purpose]

A "FabLab" is a community-based workshop that is equipped with everything from digital fabrication equipment to analog machine tools (FabLab Japan: <http://fablabjapan.org/english/>). In the LAB on the first floor of the Minato Mirai Campus of Kanagawa University, which opened in FY 2021, FabLab Minato Mirai has been established under the leadership of Associate Professor Daisuke Doyo of the Faculty of Business Administration, a member of the ISJFC. In cooperation with FabLab Minato Mirai, this joint research project seeks to create replicas based on either actual historical/folklore materials or precisely measured drawings and to create 3D scans of genuine artifacts.



## Project Research Center:

### The Kesennuma-Oshima Fishing Cooperative Library (Management and practical use)

Duration: 2016- Project Leader: YASUMURO Satoru

**[Geographical scope]** Kesennuma City, Miyagi Prefecture

**[Purpose]** As part of the conservation and restoration of materials owned by the Kesennuma-Oshima Fishing Cooperative, we sorted and classified over 4,000 items for storage in the Oshima Fishing Cooperative Library, which was completed in September 2015. The Library not only conserves the Fishing Cooperative collection but also serves as a research base for ISJFC, the Graduate School of History and Folklore Studies and other groups. The library is expected to fulfill its expanding role as a base for promoting the culture of Oshima Island under the management of "Oshima Gyokyo Bunko no Kai" (Friends of the Oshima Fishing Cooperative Library).



The Oshima Fishing Cooperative Library

## Commissioned Research:

### Publication and Preservation of Miyake Village Local Historical Materials

Duration: 2020 to 2021 (ongoing project since FY 2016)

Project Leaders: TAGAMI Shigeru, SUNAMI Soichiro

**[Geographical scope]** Miyake-jima Island, Tokyo

**[Purpose]** As part of the research project commissioned by Miyake Village, members visit the island to examine and organize the village's folk materials, which are being studied, published and preserved. Activities involve compiling a catalogue of the materials



Investigation at Miyakejima Folk Museum (November 2017)

held by the Miyakejima Folk Museum and also interviewing senior islanders about local livelihoods and customs, which will be gathered into books of oral history.

## Commissioned Research:

### Compilation of Catalogues of Historical Documents Possessed by the Japan Fisheries Research and Education Agency

Duration: 2020 to 2021 \*Ongoing project since FY 2001. However, in FY 2020, no contract was made because of the COVID-19 pandemic; only proofreading work on catalogued manuscripts was carried out.

Project Leader: YASUMURO Satoru

**[Geographical scope]** Yuasa Town, Arida District, Wakayama Prefecture, etc. (FY 2019)

**[Purpose]** Compilation and cataloging of the materials collected by ISJFC on commission from the Fisheries Agency during 1949–1955, which is now carried out as a project commissioned by the Fisheries Research Agency. Field research is being conducted in relation to the cataloging work and explanatory comments are added to the catalogued materials.



Investigation of materials in Yuasa Town (March 2019)

## Joint Research Achievements

Research reports and catalogues are being edited for the following completed joint research projects.

- **Joint research project: Social History of Japanese Colonies in Brazil**  
**[Geographical scope]** Settlements and communities of Japanese immigrants in Brazil, particularly those in the State of Sao Paulo.  
\*This study was supported by JSPS KAKENHI Grant Number 15H05172 (April 1, 2015, to March 31, 2019).
- **Joint research project: Comprehensive Studies of Oyamazaki Manor in Yamashiro Province**  
**[Geographical scope]** Oyamazaki-cho, Otokuni-gun, Kyoto Prefecture
- **Joint research project: Research on the Oku-Noto region**  
**[Geographical scope]** Wajima City, Ishikawa

# Exhibitions



The ISJFC is introducing the history of our activities spanning 100 years alongside future plans. We are also displaying the historical documents in our possession. Our aim is to enhance the museum functions of the ISJFC and to register the entire ISJFC as a museum facility.

## Full-size Partial Replica of *Bezaisen* Created by Tomoichiro Kondo

The mast section of a full-size model *bezaisen* ship of 15-ton load capacity which was created by shipwright Tomoichiro Kondo is displayed in the basement lobby of Building 3, Yokohama Campus. This *wasen* (traditional Japanese ship) model inspires us to think about our relationship with the ocean and its importance in our culture; we also plan to exhibit photographs of a sailing *bezaisen* ship.



Front view of the mast section of the model ship

Until FY 2019, exhibitions were held in the Exhibition Room of the Institute for the Study of Japanese Folk Culture, Kanagawa University, and in the Special Exhibition Room (First Floor, Building 3, Yokohama Campus). These locations are currently closed as of FY 2021.

- Please check the website for details regarding past exhibitions and future schedules.

## Restoration of Historical Documents and the Sorting of *Mingu* in the ISJFC Collection

Building 3 Yokohama Campus houses a workshop used to repair historical documents, to sort and photograph *mingu*, and to store both collections.

- **Repair Workshop and *Mingu* Sorting Room**



Practical training workshop on the application of backing to historical documents

- **Storeroom**



*Uke* (bamboo basket fish traps) acquired by the former ISJFC foundation



## Folk Cultural Studies Seminar (*Jomin Bunka Kenkyu Koza*)



The Folk Cultural Studies Seminar has been held annually since 1997 with the objective of stimulating Japanese culture research. Each seminar focuses on a certain theme in the everyday lives, culture, and history of *jomin* through lectures and symposiums.

## Practical Training Workshop for Restoration of Historical Documents

The workshop is held alongside the Folk Cultural Studies Seminar to provide training on the three basic steps of historical document restoration work: recording and organizing, repairing (mending and lining), and restoring (trimming and binding). Participants also learn the technique of separating the underlayer of *fusuma* (paper sliding doors).



## Mingu Forum

A training class to measure *mingu* artifacts began in 1974 in association with *mingu* research courses. The class took the form of a *mingu* research workshop in 2015 and became a forum in 2016. The forum is held two or three times a year and is closely coordinated with the publication *Mingu Monthly*, with each forum planned by the editing staff based on a popular theme.

Since FY 2020, videos have been posted and made available on the official website and YouTube channel.



- In addition, staff from the ISJFC have been managing public seminars organized by Kanagawa University, and we have also organized and delivered lectures and symposia co-sponsored by local authorities and newspapers in the field research locations. The ISJFC will continue to make the most of these opportunities.
- The schedule and content of future seminars, as well as details on all seminars starting with the first edition (June 1997), are available on the ISJFC website. <http://jominken.kanagawa-u.ac.jp/exhibition/list/>

## Seminars Held in FY 2020

### 24th Folk Cultural Studies Seminar “Comprehensive Study of Landscape Materials: Reading Fishing Grounds Maps 2” (December 12, 2020/Held online)

- Explanation of aims: Satoru Yasumuro
  - Stone Quarries: Technological Advances and Changes in the Landscape (Mutsuhiko Matsuda)
  - Kitayama Forestry and Private Gardens: Based on a Survey of Cultural Landscapes in the Nakagawa District of Kyoto (Hiroko Edani)
  - Considering Fisheries from the Perspective of Consumption: Concerning *Funazushi* from Lake Biwa (Michinori Hashimoto)
  - The Form and Distribution of Eri: A History Based on “Fishery Tax Accounts” (Satoru Yasumuro)
- General discussion



Venue for the online seminar



Commemorative photo of the presenters

### 23rd Folk Cultural Studies Seminar Training Workshop on Historical Document Restoration (March 8, 2021/Held online)

- 1) Recording and disassembly of damaged historical documents
  - 2) Repair (sewing/back-lining)
  - 3) Restoration (trimming and binding)
  - 4) Hands-on training for peeling off documents used as underlay of folding screens and sliding doors
- Hiroo Sekiguchi, Satoshi Shirouzu, Satoshi Yamaguchi, Satoshi Nakamura, Mariko Hirata

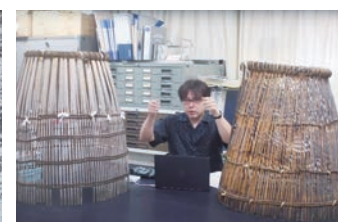


Repair and backing process. Reinforcing historical documents with washi backing

### 24th Folk Cultural Studies Seminar Mingu Forum 6 “Tottori Prefecture Fishing Baskets (*Ugui*)” (Kenji Kashimura) (March 22, 2021/Video) <http://jominken.kanagawa-u.ac.jp/exhibition/list/210322.html> (in Japanese)



Catching fish by covering them with a fishing basket



Explanation by Kenji Kashimura





## Collection of Historical Documents and Cultural Materials

The diverse holdings of ISJFC are gradually being open for public access, starting from those that have been catalogued. They are basically available for use for research purposes (prior notice required).

Our Kanagawa University Digital Archive website can be used to search for collection items, photographs and films, and some of our paintings can be viewed on our Digital Collection of Paintings site. \*For details please refer to page 10.

### Historical Documents

Historical documents include (1) old documents owned by the Institute and (2) copies of historical documents taken on-site during field research. Documents belonging to (1) have been collected by the Attic Museum and ISJFC; the copies comprising (2) were recorded on microfilm or as digital photographs.



Futagami Family Collection (owned by ISJFC)

### Hand-Copied Texts

The fishing and fisheries-related manuscripts were copied at the Tsukishima Branch on commission from the Fisheries Agency from 1949 to 1955. These hand-copied documents cover all of Japan and were compiled into around 1,900 volumes.



Hand-Copied Texts (owned by ISJFC)

### Documents of the Former ISJFC Foundation

Information on the operation of the former foundation covering over 100 years from its inception as the Attic Museum Society.

The documents include records transferred from the former foundation, papers by Shuhei Uno and in the Takeharu Kawaoka Folklore Studies Collection, and documents pertaining to the Shibusawa Foundation for Ethnological Studies.

### Paintings

Ink and water color paintings collected or copied by the staff of the Attic Museum mainly depict farming implements and farmer life.

"*Shiki Kosaku Kodomo Yugi Zukan* (Scroll of Cultivation and Children's Play in Four Seasons)" and five paintings of farm implements are available online. (For details please refer to page 10.)



*Shiki Kosaku Kodomo Yugi Zukan* (owned by ISJFC)

Catfish woodblock painting: Yoshiwara Visitors and Kashima Deity Subduing the Earthquake Catfish with a Gourd (owned by ISJFC)



Original *ebiki* (pictopedia): Wildlife drawings (Photograph: Deigyu Murata/owned by ISJFC)



### Photographs and Films



Attic Picture: People gathering at Maehama to make a shipment of pigs that are inside baskets (Catalog no. 河 1-7-8/owned by ISJFC)

● **Attic Photos and Attic Films**  
8,000 still pictures and films taken by Keizo Shibusawa and other members of the Attic Museum, mainly recording folk customs of Japan and its overseas territories in the early Showa Period.



Attic Film: "Transportation in the Past: Chuma on Ina-kaido Highway," September 1931 (owned by ISJFC)

● **Yokohama Pictures**

Colored photographs depicting the city of Yokohama around the time when its port was opened to foreign countries.



Yokohama photograph: Osanbashi and Customs House as seen from the water (F47 West Hatoba, Yokohama) (owned by ISJFC)

## Folk Materials

### ● Materials Produced for ISJFC

These materials are produced in line with research themes. Serving as records of production techniques made by artisans, the materials include forged iron samples, a collection of work clothes produced in a one-fifth scale of the original size, and *wasen* (Japanese boat) models by shipbuilder Kondo Tomoichiro.

### ● Materials Collected by ISJFC

Clothing, agricultural, household and work goods and religious items. Also, approximately 2,000 *mingu* items previously owned by merchant families, 2,000 pieces of *koema* (votive tablets), and 300 handicraft pieces made using small cuts of cloth.



Chart of production process of forged steel products (produced for ISJFC)



Quilted sleeveless coat, Shonai area, for manure sled pulling (owned by ISJFC)



Pulp cloth and raw materials (owned by ISJFC)

## Library Collection

The original holdings were collected when the Institute was an incorporated foundation. These have been augmented by purchase, exchange, and donation since it was transferred to Kanagawa University and currently number approximately 100,000 titles. Private collections include the Teizo Iyanaga Ancient Japanese History Collection and the Takeharu Kawaoka and Noboru Miyata Folklore Studies Collections. The library holdings of Shibusawa Foundation for Ethnological Studies (*Minzokugaku Shinko Kai*) were also transferred to the Institute when it was dissolved.

The total collections cover the fields of local history, folklore studies, ethnology, history of fishing, and history of traditional technology. These can be searched and accessed on the Kanagawa University Library OPAC.

Kanagawa University Library OPAC

<https://ufinity.kanagawa-u.ac.jp/?lang=english>



Former collection of the Shibusawa Foundation for Ethnological Studies

## Searching Our Collection

The Kanagawa University Digital Archive allows access to our archives and viewing of video footage; some of our paintings can be examined on the Digital Collection of Paintings page on the Institute's website. Both sites have links from the top page of the website.

<http://jominken.kanagawa-u.ac.jp/en>

### Searchable "Digital Archive" Renewal

The Digital Archive provides search and browsing functions for historical and folk materials, scientific materials, research findings, photographs, films, and more that are owned by various entities within Kanagawa University.

<https://www.kanagawa-u.ac.jp/research/digitalarchive/>

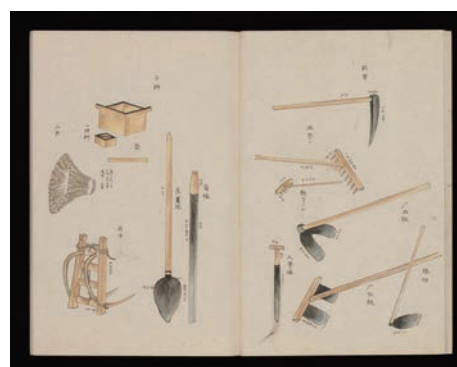


Kanagawa University Digital Archive

### Digital Collection of Paintings

*Shiki Kosaku Kodomo Yugi Zukan* (Scroll of Cultivation and Children's Play in Four Seasons) and all five works of *Paintings of Farm Implements* can be viewed on our website.

<http://jominken.kanagawa-u.ac.jp/en/books/painting.html>



Paintings of farm implements in Hiroshima (owned by ISJFC)





ISJFC issues the two periodicals: *Rekishi to Minzoku* (History and Folk Customs) and *Mingu Monthly*. ISJFC Occasional publications include *Kanagawa Daigaku Nihon Jomin Bunka Sosho* (Japanese Folk Culture Monographs), *Chosa Hokoku* (Reports on commissioned research), and *Chosa Shiryo Mokuroku*, (catalogues of materials acquired through field studies).

## Rekishi to Minzoku (History and Folk Customs)

First issued in 1986, *Rekishi to Minzoku* has been the ISJFC academic bulletin; each issue includes research papers, introduction of cultural materials, and reports on seminars and public symposiums organized by ISJFC. It is issued annually and has reached its 37th issue as of 2021.

\*The periodical can be purchased through Heibonsha.



Vol.35



Vol.36



Vol.37

## Mingu Monthly

*Mingu Monthly* focuses on research in *mingu* and material culture with its No. 638 issue published in May 2021. It was launched for the purpose of establishing *mingu* studies and has served as a platform for academic exchanges among *mingu* scholars. *Mingu Monthly* stimulated the activities of *mingu* research groups across the country, which led to the founding of the Society for *Mingu* of Japan in 1976.

- Latest edition; the details of back issues are published on the ISJFC website.



Inaugural issue



Vol. 54 No. 2

## Monographs, Research Reports, Catalogues, etc.



*100 Shunen Kinen Jigyo Kankobutsu* (Centennial Commemorative Project Publications), Study of Folk Culture Bulletin 1, Guidebook for the Restoration of Historical Documents



*Kyodo Kenkyu "Setonaikai no Rekishi Minzoku"* (Joint research "History and Folklore of Setonaikai"), photograph collection, collection of materials from the Middle Ages, Early Modern Period, folklore studies reports, annals, Collection of Sketches) 1-10

*Kyodo Kenkyu "Brazil Nihonjin Nyushokuchi no Rekishi Minzokugakuteki Kenkyu"* (Joint Research Project: Social History of Japanese Colonies in Brazil), History and Folklore, Architecture Edition 1-2



*Okunoto to Tokikunike* (Tokikuni Family in the Okunoto Area), 3 volumes of document collections and survey reports and 2 volumes of research articles based on a coordinated field program.

*Jomin Shiryo Sosho* (Japanese Folk Document Monographs), nos.1-2.



*Kanagawa Daigaku Nihon Jomin Bunka Sosho* (Japanese Folk Culture Monographs), nos.1-7.

*Kokusai Jomin Bunka Kenkyu Sosho* (International Center for Folk Culture Studies Monographs) 1-15



*Kanagawa Daigaku Nihon Jomin Bunka Kenkyujo Shozo Shiryo Mokuroku* (Catalogue of Material Collection of the Institute for the Study of Japanese Folk Culture, Kanagawa University) 1-6

*Kanagawa Daigaku Nihon Jomin Bunka Kenkyujo Chosa Shiryo Mokuroku* (Catalogue of Materials from Field Studies by the Institute for the Study of Japanese Folk Culture, Kanagawa University) 1-12

*Wajima-shi Machino-chiku Kankei Komonjo Mokuroku* (Catalogue of Historical Documents of Machino District, Wajima City) 1-5

*Suisan Sogo Kenkyu Senta Shozo Komonjo Mokuroku* (Catalogue of Historical Documents Held by the Fisheries Research Agency) 1-11



*Suisan Kenkyu/Kyoiku Kiko Shozo Komonjo Mokuroku* (Catalogue of Historical Documents Held by the Fisheries Research and Education Agency) 12-14

*Kanagawa Daigaku Nihon Jomin Bunka Kenkyujo Chosa Hokoku* (Reports on Field Studies by the Institute for the Study of Japanese Folk Culture, Kanagawa University) 10-24

*Kokusai Jomin Bunka Kenkyu Kiko Kyodo Kenkyu (shorei) Chosa Hokokusho* (International Center for Folk Culture Studies Joint Research Reports; incentive project) 25-30



*Kanagawa Daigaku Nihon Jomin Bunka Kenkyujo Nenpo* (Annual Reports of the Institute for the Study of Japanese Folk Culture, Kanagawa University) 2014-2021

*Kanagawa Daigaku Nyumon* Text Series (Kanagawa University Introductory Text Series, History and Folklore Studies Primer) 1

*Umi to Hinogyomin* (Ocean and Non-farming People) with CD of lecture



*Komonjo no Hosbu to Toriatsukai* (Repair and Handling of Historical Documents)

*Emakimono ni Yoru Nihon Jomin Seikatsu Ebiki* (Pictopedia of Everyday Life in Japan from Picture Scrolls), New Version, 5 volumes.

Video "Futagami-jima (Futagami-jima Island)" 1-3



# International Center for Folk Culture Studies



The International Center for Folk Culture Studies was established in FY 2009 based on the Institute for the Study of Japanese Folk Culture at Kanagawa University after it was approved and recognized by the Ministry of Education, Culture, Sports, Science and Technology (MEXT) as a “Joint Usage and Research Center.” The Center carried out activities during its second phase after being re-accredited in FY 2014. The accreditation ended on March 31, 2020.

For the latest information and further details, please visit the website of the International Center for Folk Culture Studies.

## Ongoing Joint Research Projects

As of FY 2021, two joint research groups are preparing to present their results after being selected through a public competition.

### “General” Project

1. Research on the History of Maritime Areas and People (FY2018-2020)
- An Ethnographical Study of Traditional Female Divers in Taiwan Called Hailu, with the Aim of Developing Research on Traditional Female Divers in East Asia and the Pacific Rim



A woman goes into the sea after scattering her paper money in the air (August, 2018)

### “Incentive” Project

(FY 2019-2020)

- Japanese Immigrants in Brazil and Their Lives As Seen through *Mingu* in Registro, State of Sao Paulo



Receiving explanations about a press for cocoa, cassava, etc. (Tomé Açú settlement/ January, 2020)

## Dissemination of Research Results

The International Center for Folk Culture Studies presents reports on joint research results through joint research forums, international research forums, and in its publications.

### Joint Research Forums

- 7th edition of “Samurai and Castles of Medieval Kumano” (January 23, 2021)  
Joint Research Project “Incentive” Project: Comprehensive Study of Archival Documents on a Kumano Pirate Clan – the Koyama Family
- 8th edition of “Reading the Shapes: The Beginning of the Morphology of *Mingu*” (March 6, 2021)  
Joint Research Project “General” Project: Fundamental Research on Functional Analysis of *Mingu*

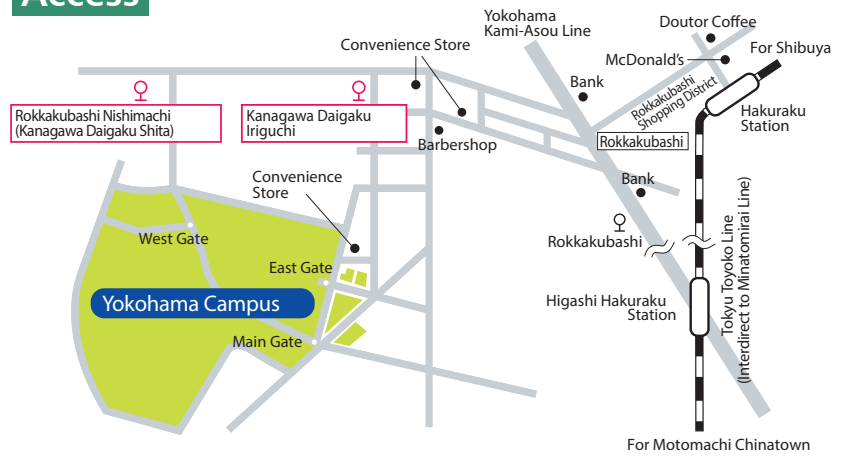
### Publications

- Joint Research Projects “General” Project International Center for Folk Culture Studies Monographs 14  
Fundamental Research on Functional Analysis of *Mingu* [Including CD] (issued March 2021)
- Joint Research Projects “Incentive” Project Reports on Field Studies by the Institute for the Study of Japanese Folk Culture No. 29  
(International Center for Folk Culture Studies joint research project [incentive project] research report) Maritime History of Kumano: A Comprehensive Study of Koyama Family Papers (issued March 2021)



- This organization has been promoting activities as a joint research center since FY 2009, focusing on project-based joint research. However, this will come to an end in FY 2021. Some of the projects will be taken over by the Institute for the Study of Japanese Folk Culture.

## Access



## INSTITUTE FOR THE STUDY OF JAPANESE FOLK CULTURE KANAGAWA UNIVERSITY

**Address:** 3-27-1 Rakkakubashi, Kanagawa-ku, Yokohama-shi,  
Kanagawa 221-8686 JAPAN

**Telephone:** +81-(0)45-481-5661

**Email:** [jomin-office@kanagawa-u.ac.jp](mailto:jomin-office@kanagawa-u.ac.jp)

**URL:** <http://jominken.kanagawa-u.ac.jp/en/>

**The Research Center for Nonwritten Cultural Materials**  
<http://himoji.kanagawa-u.ac.jp/english/>

**International Center for Folk Culture Studies**  
<http://icfcs.kanagawa-u.ac.jp/en/>

**Kanagawa University Digital Archive**  
<https://www.kanagawa-u.ac.jp/research/digitalarchive/>

**Opening hours:** Monday–Friday 9:00 a.m.–4:00 p.m.

**Closed on:** Saturdays, Sundays, national holidays, other days  
when the University is closed (including summer and winter vacation)



Facebook



Twitter



YouTube

November 2021