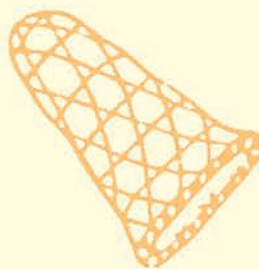
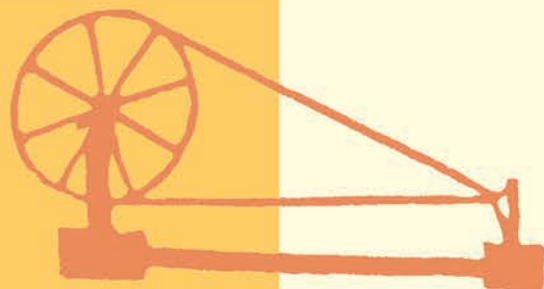
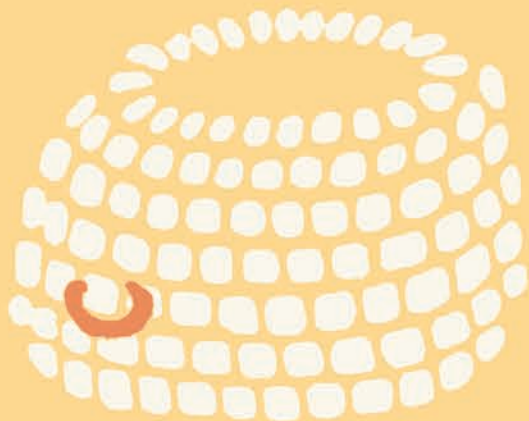


INSTITUTE FOR THE STUDY
OF JAPANESE FOLK CULTURE
KANAGAWA UNIVERSITY

2024—2026

Commemorative Issue for the Centennial 2



Jomin Bunka Museum: Toward Integrated Museum Studies



Jomin Bunka Museum

Contents

Institute for the Study of Japanese Folk Culture 1
Activities and Projects
Members of ISJFC
Centennial of the Founding of the ISJFC
Research 5
Jomin Bunka Museum 8
Holdings 9
Collection of Historical Documents and Cultural Materials
Digital Browsing of Materials in the Collections
Library Collection
Courses 11
Folk Cultural Studies Seminar (<i>Jomin Bunka Kenkyu Koza</i>)
Practical Training Workshop for Restoration of Historical Documents
<i>Mingu</i> Forum
Publications 12
<i>Rekishi to Minzoku</i> (History and Folk Customs)
<i>Jomin Bunka Kenkyu</i>
(Bulletin of Institute for the Study of Japanese Folk Culture)
<i>Mingu Monthly</i>
Monographs, Research Reports, Catalogues, etc.

ISJFC

<http://jominken.kanagawa-u.ac.jp/en/>

Kanagawa University Digital Archive

<https://www.kanagawa-u.ac.jp/research/digitalarchive/>



Original *ebiki* (pictopedia) images, caricatures of birds, animals and plants, *nagabitsu* chest/copy

As it celebrated its Centennial, the Institute for the Study of Japanese Folk Culture (ISJFC) worked to enhance its functions as a museum and was therefore designated as a facility equivalent to a museum under Article 29 of the Museum Act on March 10, 2023. The Jomin Bunka Museum was born out of this process.

This change has allowed the Institute to become a research institute with stronger museum functions than ever, engaging in integrated museum studies. The findings of joint research projects and other activities will be disseminated to the public through exhibitions, workshops, and other museum projects, while also being utilized in university education, including curatorial training. Integrated museum studies is a way of integrating research and education and contributing to society made possible by the very fact that this university-affiliated research institute also possesses museum functions.

Message

Toward the Next 100 years of the ISJFC

In 2021, Institute for the Study of Japanese Folk Culture celebrated the 100th anniversary of its founding. In 1921, Keizo Shibusawa founded the Attic Museum Society, which was renamed the Attic Museum in 1925; it later became the Institute for the Study of Japanese Folk Culture in 1942. The Institute became a Foundation in 1950. In 1981, the 60th anniversary of the founding of the Institute, it became an affiliated research institute of Kanagawa University, and the Institute for the Study of Japanese Folk Culture, Kanagawa University, was established. The five-year period beginning in Fiscal Year (FY) 2021 is positioned as the Centennial Years. Projects such as the Jomin Bunka Kenkyu Lectures and commemorative publications are underway.

The Institute is also working to further enhance itself as a center for joint research projects and collaborative efforts, in addition to strengthening its museum functions. Over the next 100 years, the Institute will bring together members who transcend the boundaries of their professions and fields of expertise to reach new horizons. Here, let us reaffirm the original significance of this Institute in the words of Keizo Shibusawa:

「何を自分はアチックに見出さんとしつゝあるか。人格的に平等にして而も職業に専攻に性格に相異つた人々の力が仲良き一群として働く時その総和が数学的以上の価値を示す喜びを皆で共に味ひ度い。チームワークのハーモニアスデヴァエロップメントだ。」 (『アチックマンズリー』第1号 1935年)

“What do I hope to find in the ‘Attic’? I hope to share with fellow scholars of equal standing but in diverse careers and research fields as well as of different personalities, the joy of engaging in joint research which, as a whole, surpasses what would have been achieved through the sum of individual efforts. I would describe it as the harmonious development of teamwork efforts.” (*Attic Monthly*, No. 1, 1935)

SEKIGUCHI Hiroo

Director

Institute for the Study of Japanese Folk Culture
Kanagawa University

Institute for the Study of Japanese Folk Culture



For the latest information, visit the Institute website.

The Institute for the Study of Japanese Folk Culture (ISJFC) is an academic research institute attached to Kanagawa University that carries out research on the lives, cultures, and history of the Japanese people in a wide variety of domains.

With its origins in the Attic Museum Society, founded in 1921 by Keizo Shibusawa, the grandson of Eiichi Shibusawa, the Institute for the Study of Japanese Folk Culture (ISJFC) conducted research activities relating to the lives and cultures of people in various parts of Japan, particularly on *mingu* (folk implements) and the history of fisheries, in the pre- and post-war period. The ISJFC was later invited to be the part of Kanagawa University, where it continues this tradition of research, and celebrated the centenary of its establishment in 2021.

In anticipation of the next 100 years, the Institute will enhance its functions as a center for collaborative use and joint research projects. In 2023, the Institute was designated as a facility equivalent to a museum and its former Exhibition Room was reopened as the Jomin Bunka Museum.

Embracing Keizo Shibusawa's perspective of "harmonious development," ISJFC provides opportunities for research exchange among researchers from within and outside the institute alongside educational activities in relevant fields.

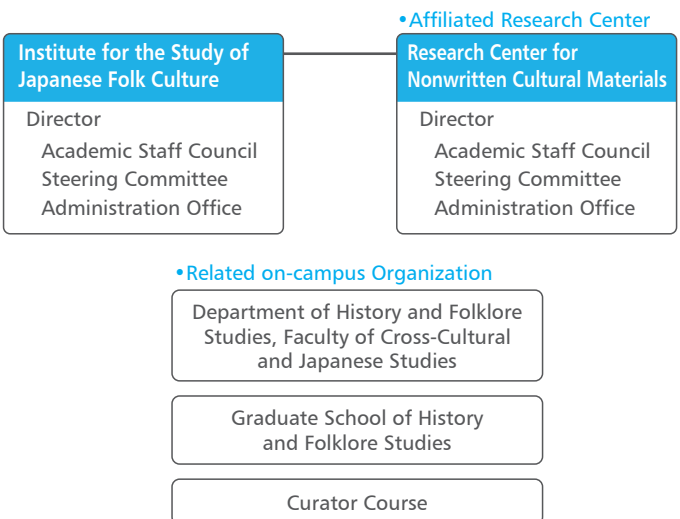


Keizo Shibusawa and the Attic Museum

Keizo Shibusawa (1896-1963) was born as a grandson of entrepreneur Eiichi Shibusawa. He served as the Governor of the Bank of Japan during the Second World War and Minister of Finance in the early postwar years. In 1921, Keizo Shibusawa founded the Attic Museum Society, which later began collecting and exhibiting toys and *mingu*. A number of fellow researchers joined him in advancing *mingu* studies, provincial studies or research on the history of fisheries. The spirit of "harmonious development" advocated by Keizo Shibusawa continues to the present day.



Organization Structure



Cooperation with Undergraduate, Graduate, and Certification Programs

● Department of History and Folklore Studies in the Faculty of Cross-Cultural and Japanese Studies

The Department of History and Folklore Studies, Faculty of Cross-Cultural and Japanese Studies, is grounded in the traditions of the Institute for the Study of Japanese Folk Culture and systematically linked to the existing program of the Graduate School of History and Folklore Studies, Kanagawa University Graduate School. Its programs facilitate student learning in the fields of "history," "folklore studies," and "culture vitalization."



Illustrations on the walls by students of the Production Committee for "The Room of a KU Student" exhibition

● Graduate School of History and Folklore Studies, Kanagawa University

Kanagawa University Graduate School of History and Folklore Studies is an educational arm of the ISJFC. Here, education and research activities are carried out in close relation with the ISJFC and the Research Center for Nonwritten Cultural Materials.

● Curator Course

In 2023, the Jomin Bunka Museum was established and the Institute was designated as a "facility equivalent to a museum" under Article 29 of the Museum Act. Since then, the Institute has accepted museum interns for museum training and has provided materials from its collection for classes and practical training to help students acquire qualifications.

1. Publication of Research Findings



Core Joint Research Project “Comprehensive History of Everyday Life”
12th Open Meeting The History and Folklore of the Toilet (February 2024)

The findings of joint research projects led by the staff of the Institute are widely publicized in the form of various publications, symposiums, exhibitions, and research meetings. The Institute website provides up-to-date reports on field surveys and study groups as information becomes available.

2. Jomin Bunka Museum

The research conducted at the Institute has resulted in the collection, compiling, and preservation of 100,000 items of historical and folkloric materials in the Institute’s collection. The Jomin Bunka Museum will make these exhibits available to the public, and the findings of joint research projects will also be made available to society at large through exhibits.

3. Collection, Research, and Publicization of Materials

The historical materials collected in the joint research projects and the history and folklore archives of the Institute are being compiled and catalogued for use in future research. The archives are also being made available to the public with the Digital Archive.



Digital photography of Historical documents

4. Institute Seminars

Occasional seminars have been held since 1983 to share research findings among the members of the Institute. External specialists are also invited to read their papers. Open to public. A total of 140 sessions have been held as of June 2024.



138th The Society for ISJFC Research Seminar (February 2024)

5. Academic Exchange

ISJFC collaborates with various institutions in different regions and different research fields.

- Yokohama History Museum
- Wajima City Board of Education (Ishikawa)
- Miyake Municipal Board of Education
- Japan Fisheries Research and Education Agency
- The Society for *Mingu* of Japan

● Academic Exchange Agreements

ISJFC conducts academic exchange with the following international institutions to enhance mutual understanding and cooperation in folk culture studies:

- School of Arts and Humanities, Shandong University of Arts and Design, China (August 1, 2024)
- School of Cultural Resources, Taipei National University of the Arts (March 28, 2020)
- National Museum of Ethnology, Japan (March 26, 2020)
- Institute of Oceanic Culture, National Taiwan Ocean University, Taiwan (June 28, 2017)
- China Marine Culture Research Center, Zhejiang Ocean University, China (May 25, 2016)
- Center of Japanese Studies, University of Sao Paulo, Brazil (April 1, 2012)
- Institute of Korean Cultural Heritage, Chung-Ang University, South Korea (July 14, 2012)
- Institution for Marine and Island Cultures (MIC), Mokpo National University, South Korea (April 1, 2011)
- Youngnam Culture Institute, Kyungpook National University, South Korea (December 28, 2009)
- Institute for Maritime Culture, Pukyong National University, South Korea (December 25, 2009)
- Institute of Oceanic Culture, Ocean University of China, China (November 24, 2009)
- Ocean Culture and Economic Research Center, Shanghai Ocean University, China (November 20, 2009)

● East Asia Island and Ocean Forum

The East Asian Island and Ocean Forum was launched in 2012 with research institutions in Korea, China and Japan. The host institution rotates annually among the three countries. In 2023, the 10th Forum was held in Mokpo, Korea, hosted by Mokpo National University under the theme “The Anthropocene, Changes in Island Humanistic Geography and Reconstruction of Sea Areas.”

6. Research Center for Nonwritten Cultural Materials

Research Center for Nonwritten Cultural Materials was established and attached to the Institute to develop the 21st Century COE Program “Systematization of Nonwritten Cultural Materials for the Study of Human Society.” With the focus on the forms of human activity that are not expressed by the written word, the Center is dedicated to the study and collection of nonwritten cultural materials. The Center put particular effort into the dissemination of knowledge of the nonwritten cultural materials to the international research community.

Members of ISJFC

[KEY] Name (Position) I : Title II : Degree III : Area of Expertise *As of October 2024 *The degree section is included only for members with a Ph.D.

ARAKAKI Yumeno

I : Assistant Professor, Faculty of Cross-Cultural and Japanese Studies, Kanagawa University
II : Ph.D III : Folklore Studies

DOYO Daisuke

I : Associate Professor, Faculty of Business Administration, Kanagawa University II : Ph.D.in Engineering
III : Industrial Engineering, Digital Fabrication

HIRAI Makoto

I : Professor, Faculty of Human Sciences, Kanagawa University
II : Ph.D III : Human Geography, Regional Geography

HIRAYAMA Noboru

I : Associate Professor, Faculty of Cross-Cultural and Japanese Studies, Kanagawa University
II : Ph.D III : History of Modern Japan

HIROTA Ritsuko

I : Professor, Faculty of Business Administration, Kanagawa University II : Ph.D
III: Chinese Ritual Ceremonies, Chinese Ritual Performing Arts, Chinese Folklore

KANEMAKI Takahiko

I : Fixed-term Assistant Professor, Faculty of Architecture and Building Engineering, Kanagawa University
II : Ph.D III : Architectural history and design

KANG Myungchae

I : Fixed-term Assistant Professor, Faculty of Architecture and Building Engineering, Kanagawa University II : Ph.D
III: History of Japanese Modern Architecture, History of Korean Modern Architecture

MAEDA Yoshihiko (Executive Board Member)

I : Professor, Faculty of Cross-Cultural and Japanese Studies, Kanagawa University III : Ancient Japanese History

MARUYAMA Yasuaki (Executive Board Member)

I : Associate Professor, Faculty of Cross-Cultural and Japanese Studies, Kanagawa University II : Ph.D III : Folklore

NAKABAYASHI Hirokazu (Executive Board Member)

I : Associate Professor, Faculty of Cross-Cultural and Japanese Studies, Kanagawa University
II : Ph.D III : Chinese History

OKAWA Hiromu

I : Professor, Faculty of Cross-Cultural and Japanese Studies, Kanagawa University
II : Ph.D III : Modern Japanese History

OGUMA Makoto (President *Until March 2025)

I : Professor, Faculty of Cross-Cultural and Japanese Studies, Kanagawa University
II : Ph.D III : Folklore, Comparative Cultural Studies

SEKIGUCHI Hiroo (Director)

I : Professor, Faculty of Cross-Cultural and Japanese Studies, Kanagawa University
II : Ph.D III : Early Modern Japanese History

SENSUI Hidekazu (Executive Board Member)

I : Professor, Faculty of Business Administration, Kanagawa University
II : DPhil III : Social Anthropology

SHIITADA Atsushi

I : Professor, Faculty of Cross-Cultural and Japanese Studies, Kanagawa University
II : Ph.D III : Modern Japanese History, History of Ryukyu

SUNAMI Soichiro

I : Associate Professor, Faculty of Cross-Cultural and Japanese Studies, Kanagawa University
II : Ph.D III : Buddhist Folklore, Material Culture Studies

SUZAKI Fumiyo

I : Associate Professor, Faculty of Architecture and Building Engineering, Kanagawa University II : Ph.D
III: History of Housing, History of Kitchen, History of Modern Architecture

TAKAGI Ryo

I : Professor, Faculty of Business Administration, Kanagawa University II : Ph.D
III: Cultural Anthropology, Southeast Asian (Thai) Studies

TATSUMI Masako

I : Associate Professor, Faculty of Cross-Cultural and Japanese Studies, Kanagawa University
II : Ph.D III : Medieval Japanese History

UCHIDA Seizo

I : Project Professor, Faculty of Architecture and Building Engineering, Kanagawa University
II : Ph.D III : History of Japanese Architecture

YAMAMOTO Shino

I : Professor, Faculty of Cross-Cultural and Japanese Studies, Kanagawa University
II : Ph.D III : Folklore, Travel Culture

YASUMURO Satoru

I : Professor, Faculty of Cross-Cultural and Japanese Studies, Kanagawa University II : Ph.D
III: Folklore (subsistence economy, environment), Material Culture

YOSHIZAWA Tatsuya

I : Professor, Faculty of Human Sciences, Kanagawa University
II : Ph.D III : Experimental Psychology, Perceptual Psychology, Visual Science, Color Psychology

ZHOU Xing

I : Professor, Faculty of Cross-Cultural and Japanese Studies, Kanagawa University
II : Ph.D III : Chinese folklore, Chinese cultural anthropology

● Please refer to our website for the latest information.

Centennial of the Founding of the ISJFC

In 2021, the Institute for the Study of Japanese Folk Culture, Kanagawa University celebrated its 100th anniversary, the Centennial of its Founding. The Institute began as a small museum that Keizo Shibusawa (1896–1963) built with friends in the roof space of a storage shed at his home when he was still a student at Tokyo Imperial University. In May 1921, shortly after graduating from college, Shibusawa consulted with friends and founded the Attic Museum Society, a society for academic research. In 1925, the society's name was changed to the "Attic Museum."

Together with his colleagues, Shibusawa conducted historical and ethnographic research on the life and culture of *jomin*, or commoners. The driving force that motivated Shibusawa was his passion for making the studies he undertook in his spare time from his work in banking into genuine research that would contribute to humanity around the world.

In 1942, the Attic Museum changed its name to the "Institute for the Study of Japanese Folk Culture." In 1981, the Institute was invited by Kanagawa University to become an affiliate organization, and in 1993 the Graduate School of History and Folklore Studies, Kanagawa University Graduate School, was established. This was followed in 2020 by the Department of History and Folklore Studies, Faculty of Cross-Cultural and Japanese Studies. In 2023, the former Exhibition Room was reopened as the Jomin Bunka Museum. The Institute, which began in an attic, has grown into a research and educational institution that interacts with researchers from Japan and abroad and hosts both Japanese and international students.

Over the five years from 2021 to 2025, the Institute for the Study of Japanese Folk Culture, Kanagawa University is holding a series of seminars and publishing centennial commemorative publications. The intellectual curiosity that was once limited to the confines of an attic is still growing in anticipation of the next 100 years.



Attic Museum (Late 1920s)
Catalog no. 写4-1-7-2



People with *mingu* at the Attic Museum
Catalog no. 7-78-12

Commemorative Events

Related Symposiums

- Folk Cultural Studies Seminar:
100 Years of the Institute for the Study of Japanese Folk Culture
- Keizo Shibusawa and the Japanese Modern Era: 100 Years of Crossing Borders and Synthesizing Knowledge (25th Seminar, December 4, 2021)
- The Distant/Near Past in Material Culture: *Mingu* Research and Archaeology (26th Lecture, December 3, 2022)
- Researching Historical Materials of the Lifeworld (27th Lecture, December 9, 2023)

Establishment of the Museum

- Designation as a facility equivalent to a museum (March 10, 2023)
- Opening of the Jomin Bunka Museum (March 13, 2023)

Publications

- The first issue of *Jomin Bunka Kenkyu*: Bulletin of Institute for the Study of Japanese Folk Culture Volume 1 (2023), followed by one or two volumes each year
- Komonjo shufuku koza* (Lectures on the Restoration of Historical Documents) (Benseisha Publishing Inc., March 2024)
- Shomotsu-gaku: Shibusawa Keizo to Saigyodo Bunko (kari)* (Bibliography: Shibusawa Keizo and the Saigyodo-Bunko Collection [tentative title]) (Benseisha Publishing Inc., forthcoming)

Digital Releases

- A special website commemorating the Centennial of the Institute launched on the Institute's website (July 16, 2021)
- 100-nen no ayumi nenpyo (Jindai jidai)* (100-Year Chronology of Progress [The KU Era]) released (September 1, 2023)
- Establishment of a database of fishing-ground maps (to be released in FY2024)

- Please refer to the website for a detailed history of the Institute.



New Attic Museum building (completed in 1933)
Catalog no. 河1-6-15

A special website and a timeline of the 100-year history (KU era) are available for viewing.



Special website

Symposium Posters for Commemorative Events



25th Seminar:
Keizo Shibusawa and
Modern Japan



26th Seminar:
The Distant/Near Past
in Material Culture:
Mingu Research and
Archaeology



27th Seminar:
Researching Historical
Materials of the
Lifeworld



Aims and Overview

Since the Attic Museum was founded by Keizo Shibusawa, the Institute's research and analysis projects have been characterized by fieldwork, rather than mere deskbound analysis.

Our joint research projects are interdisciplinary, collaborative efforts to study local lifestyles and cultures as a whole, in the three categories listed below.

We are also promoting joint research projects to promote and disseminate the culture of Oshima Island in Kesenuma City, Miyagi, including establishing a research center and commission of research efforts.

• Joint Research Categories



A Core Joint Research Projects "Comprehensive History of Everyday Life"

Pioneering and interdisciplinary joint research projects are carried out by researchers as a team from medium- and long-term perspectives. Research is promoted through the collection and processing of materials acquired in field studies based on the themes of everyday life centering on daily necessities (primarily food, clothing and housing).

B Basic Joint Research Projects

Medium- and long-term joint research projects are carried out based on materials held by the ISJFC, leading to enhanced museum functionality, which is a basic policy of the ISJFC.

• Public Call for Basic Joint Research Projects

From FY1982 to FY2014, the Institute commissioned and encouraged research on specific themes. Further, we promoted open joint research projects from FY2009 to FY2019 under certification as a Joint Usage/Research Center by the Ministry of Education, Culture, Sports, Science and Technology, and since FY2022, we have been promoting research using the materials in our collections. Applications are accepted every April through the Institute website.

C Topical Joint Research Projects

These projects are based on individual topics from medium- and short-term perspectives, which are positioned as formative joint studies that might become core and basic research projects in the future.

A Core Joint Research Projects "Comprehensive History of Everyday Life"

"Nichijo-Sahan (nothing out of the ordinary)": What Japanese people have historically been eating

Duration: 2020- Project Leader: ZHOU Xing

[Geographical Scope]

Japan and elsewhere in East Asia

[Purpose]

This research considers the special characteristics of "washoku (traditional Japanese food)" by looking at what the Japanese people have been eating from a diverse, inter-cultural perspective in order to clarify the relationship between *washoku* and the overall eating customs of *JOMIN* (common people) in Japan. In a time of diversification of Japanese eating customs, We aim to reconsider previous maxims and grasp the reality and representation of the overall eating culture of Japan as "Nichijo-Sahan" ("nothing out of the ordinary" but literally "daily tea and rice") from a broad viewpoint.



Presentation by Eiji Niawa, 4th Open Meeting

[Purpose]

This is a comprehensive study of how threads of various materials were made into cloth and how such cloth was put to use. Cloth is primarily used for garments, but it has many other uses, and the materials that are needed to make it vary according to the intended use. The purpose of the present study is to comprehensively examine how usage was impacted by differences in the characteristics of the cloth depending on the material.

The History and Folklore of the Toilet

Duration: 2019- Project Leader: SUZAKI Fumiyo

[Research Subject]

Toilet Space, Equipment, Treatment of Excrement, and Hygiene in Historical Materials and Excavated Structures in Japan and Overseas

[Purpose]

This is a comprehensive study of the history and folklore of toilets and the treatment of excrement, primarily from the perspectives of historical studies, folklore studies, and architecture. Specifically, by (1) collecting and organizing relevant historical materials, (2) conducting historical studies of remains in Japan and other countries, and (3) holding lectures by specialists in related fields such as sociology and geology, as well as the fields listed above, a composite investigation is conducted from the perspectives of various fields, regions, and eras.

General Research on Weaving and Uses of Clothes

Duration: 2019- Project Leader: ARAKAKI Yumeno

[Geographical Scope]

Areas that have relation to textiles and raw materials used to create them, mainly in Japan



A special exhibition from the Tsutomu Watanabe Collection was held to showcase *sashiko* embroidery from the Shonai, Tsugaru, and Nanbu regions.

Educational Poster Describing the Introduction of Flush Toilets in the Taisho Period "Let's Get Familiar with Cultural Facilities" (Poster from 1919 [Taisho 8] for the Lifestyle Improvement Exhibition by the Ministry of Education; Source: National Museum of Nature and Science, Tokyo)



B Basic Joint Research Projects

Study Utilizing Hand-Copied Texts, Historical Documents, and Drawings Held by the Institute for the Study of Japanese Folk Culture to Examine Disputes, Interaction, and Trade in Seaside/Mountain/Farming Villages along the Wakasa Bay Coast and its Vicinity

Duration: October 2023- March 2027

Project Leaders: HASEGAWA Yuko SEKIGUCHI Hiroo

This joint research project was accepted through an FY2023 open recruitment for joint studies involving the use of museum collections.

[Geographical scope]

Sea, mountain, and farming villages in the Wakasa Bay coastal area as well as the regions of shared interaction and trade

[Purpose]

This study will elucidate the characteristics of coastal villages with multiple livelihoods, and the trade and exchange conducted with nearby mountain villages, farming villages, and local cities, as well as the realities of conflicts and disputes, with a focus on the Wakasa Bay coast. By collecting extant historical documents in the region, using the hand-copied texts, historical documents and drawings in the Institute collection, and conducting field research, we will outline an understanding of the inside truths regarding the extent of trading areas and various frictions among the villages, the factors behind them, and the processes of their formation and change. The research will be conducted on an interdisciplinary basis.



First Survey of Hand-Copied Texts in Fukui Prefecture (December 2023)

A Comprehensive Study of Keizo Shibusawa

Duration: 2022- Project Leader: MARUYAMA Yasuaki

[Geographical Scope]

Sites and Institutions Related to Keizo Shibusawa; primarily in Japan

[Purpose]

Keizo Shibusawa was a scholar who presided over the Attic Museum, the forerunner to the Institute. He was also a businessman, following in the footsteps of his grandfather, Eiichi, and held important positions in the worlds of politics and business. By studying the ideas and accomplishments of a figure of this magnitude, we hope to gain valuable input regarding knowledge and action for the coming age, as well as considering certain aspects of modern Japan.



Commemorative photo of Kim Jiho from Nakwol Island, Korea, being welcomed to the Attic Museum (catalog number:河岡1-26-4-A)

Research on Evora *Byobu* Folding Screen Texts

Duration: 2020- Project Leader: SEKIGUCHI Hiroo

[Purpose]

The purpose of this research is to study under-layer texts in *byobu* folding screens located overseas from a material science perspective. This project is based on the study of texts found in the Evora Folding Screens (replicas) in the University's collection. By documenting both the folding screens that were sent overseas and the under-layer texts found in them, this project aims to open up new insights into the history both of the movement of cultural artifacts and of the interaction and relationships people make.



Evora *byobu* folding screen text replica

*In 2021, the research category/study name was changed from Topical Joint Research Project "Foundational Research on the *Namban Byobu* Underlayer Sheets of Porto, Portugal" to Basic Joint Research Project "Pioneering New Areas of Research through a Comprehensive Study of the Porto and Evora *Byobu* Screen Texts."
*From July 9, 2021, under the auspices of JSPS Grant-

in-Aid for Challenging Research (Pioneering) "Pioneering New Domains Through Comprehensive Research Study of Porto *Namban Byobu* Folding Screens."
*This study is supported by JSPS Grant-in-Aid No. 21K18119 (July 9, 2021, to March 31, 2024).
Note: As of April 1, 2024, the project name was changed to Basic Joint Research Project "Research on Evora *Byobu* Folding Screen Texts"

The Development of Field Sciences in Japan: Reflections from the Institute for the Study of Japanese Folk Culture Archive Materials

Duration: 2016- Project Leader: SENSUI Hidekazu

[Geographical scope]

The locations where research was conducted by the Shibusawa Foundation for Ethnological Studies (*Minzokugaku Shinko Kai*) and the Attic Museum.

[Purpose]

This is a joint research project based on materials passed on to the Institute from the Shibusawa Foundation for Ethnological Studies, along with the Attic Museum's photographs and films. In particular, the project will conduct follow-up surveys and collect information associated with previous research. It will coordinate the effective use of the materials between the institutions possessing these materials of the same origin. Through these efforts we aim to establish a fresh view of the development of field sciences in Japan.



12th Open Seminar "Ichiro Iwakura's Research on Kikajima: Obverse and Reverse" Dr. Chun Kyung Soo(전경수)

Comprehensive Studies on the Landscape and History of Sea Areas and Seaside Community

Duration: 2015- Project Leader: YASUMURO Satoru

[Geographical scope]

The coastal villages and their fishing grounds depicted on the fishing grounds maps possessed by the ISJFC.

[Purpose]

This study will continue the research on the history of the coastal villages that the ISJFC has been engaged in since its foundation, while adding further depth to the research with the new perspective of landscape history. Interdisciplinary discussions will be held at symposiums, etc., and the results will be compiled into a book of articles. A database of fishery maps held by the Institute will be created and made widely available to society as a research resource.



Map of squid fishing grounds in the former villages of Yura, Sanze, and Kobato (Yamagata Prefecture)

C Topical Joint Research Project

Research on the History and Folklore Materials in Digital Fabrication Era

Duration: 2019- Project Leader: DOYO Daisuke

[Purpose]

A "FabLab" is a community-based workshop that is equipped with everything from digital fabrication equipment to analog machine tools. In this joint research project, in cooperation with FabLab MinatoMirai at the Kanagawa University Minato Mirai Campus, we will explore the creation of replicas from actual historical and folk materials and measured drawings and the conversion of actual materials into 3D data.



FabLab MinatoMirai

Project Research Center:

The Kesennuma-Oshima Fishing Cooperative Library (Management and practical use)

Duration: 2016- Project Leader: SEKIGUCHI Hiroo

[Geographical scope]

Kesennuma City, Miyagi Prefecture

[Purpose]

As part of the conservation and restoration of materials owned by the Kesennuma-Oshima Fishing Cooperative, we sorted and classified over 4,000 items for storage in the Oshima Fishing Cooperative Library, which was completed in September 2015. The Library not only conserves the Fishing Cooperative collection but also serves as a research base for ISJFC, the Graduate School of History and Folklore Studies and other groups. The library is expected to fulfill its expanding role as a base for promoting the culture of Oshima Island under the management of "Oshima Gyokyo Bunko no Kai" (Friends of the Oshima Fishing Cooperative Library).



The Oshima Fishing Cooperative Library

Commissioned Research:

Publication and Preservation of Miyake Village Local Historical Materials

Duration: 2016-2024

Project Leader: ARAKAKI Yumeno

[Purpose]

We will conduct on-site research and compile local materials from Miyake Village to promote the research, publicization, and preservation of these materials. This is a commissioned research project for Miyake Village, Tokyo. Specifically, we will survey and organize the *mingu* in the collection of the Miyakejima Local History Museum and create an inventory of the materials. There is an urgent need to investigate the cultural properties and establish a system for their preservation; this survey will serve as the foundation for that initiative.



Conducting the survey in FY2023

Commissioned Research:

Compilation of Catalogues of Historical Documents Possessed by the Japan Fisheries Research and Education Agency

Duration: 2001-2019 Project Leader: YASUMURO Satoru

Note: While the commissioned research has been suspended since FY2020, the cooperative relationship is ongoing.

[Purpose]

From 1949 to 1955, the national government (Fisheries Agency) commissioned the Institute for the Study of Japanese Folk Culture to conduct a research and preservation project on fishery systems materials. About 200,000 items of fishery and fishing-village materials from all over Japan were collected and stored at the National Research Institute of Fisheries Science, Japan Fisheries Research and Education Agency. The Institute has been commissioned to collate and catalogue the collection, but the project is currently suspended.



Material Survey in Yuasa Town (March 2019)

Commissioned Research:

Survey on the Kamitokikuni and Tokikuni Family Documents of Wajima City

Duration: 2022 Project Leader: SEKIGUCHI Hiroo

Note: The cooperative relationship with Wajima City has continued from FY2023 onwards.

[Purpose]

Keizo Shibusawa visited Noto in 1950, and a comprehensive study of the Kamitokikuni and Tokikuni family documents was conducted by Yoshihiko Amino after 1982. In 2022, we were commissioned by Wajima City to prepare an appraisal report on the Kamitokikuni and Tokikuni family documents. We also prepared an annotated commentary for the catalog collection. We offer our deepest sympathies and condolences to the victims of the Noto Peninsula Earthquake of 2024.



Briefing session with Wajima City officials

2024 Noto Earthquake Response Team

From its early stages, the Institute has focused on the culture and history of the Oku-Noto region and has continued to conduct research and produce findings mainly in the Machino district of Wajima City, where the Tokikuni family home was located. In response to the recent earthquake, we have established the 2024 Noto Earthquake Response Team to recollate various survey data and research materials.

We are committed to making every effort to properly preserve damaged archives in cooperation and collaboration with related organizations.



Materials Related to the 1950 Oku-Noto Survey

Joint Research Achievements

Research reports and catalogues are being edited for the following completed joint research projects.

- **Joint Research Project: Research on the Oku-Noto Region**

[Geographical Scope]

Wajima City, Ishikawa

Editing is scheduled for FY2024 - FY2026.

- Catalog of Inoike Family Documents



Catalog of Iwakura-ji Temple Documents (December 2019)

- **Basic Joint research project: History and Folk Culture of Futagami Island with Particular Focus on Futagami-Family**

[Geographical Scope]

Futagamijima Island, Matsuyama City, Ehime Prefecture

- Collating materials related to the Futagami family and making them cultural resources



Island Sketchbook: Futagami Island Pictorial Materials (March 2020)



The Institute, as a research institute with museum functions, aims at a new form of integrated museum studies.

The former Exhibition Room was reopened on March 13, 2023, as the Jomin Bunka Museum. This museum is a place where historical and folkloric materials collected through research activities are made widely available to the public, the findings of joint research projects are made available to society through exhibitions and other museum activities and are actively utilized for curatorial training and university education.

Exhibitions



Jomin Bunka Museum

The permanent exhibition of the Jomin Bunka Museum is divided into four sections, beginning with “Approaches to Studying Japanese Folk Culture,” which introduces the Institute, followed by “Life along the Sea and Its Wisdom,” “Fabrics for Everyday Clothes,” and “Documenting Local Lives.” On the floor is a map of Japan showing the areas covered by the Institute’s collection of materials on lifestyle and culture and on the exterior wall is a timeline of the 100-year history of the Institute.

Permanent Exhibitions



Approaches to Studying Japanese Folk Culture



Life along the Sea and Its Wisdom

Jomin Bunka Museum

1st floor, Building 3, Yokohama Campus, Kanagawa University (Museum Commons)

[Open] Mondays-Saturdays 10:00-17:00

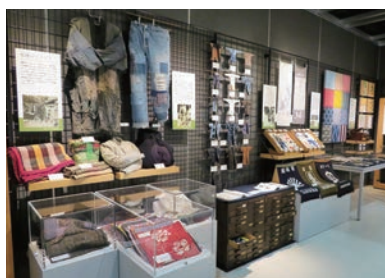
*However, closed Saturdays during non-class periods

[Closed] Sundays, National holidays

*Except for class days University holidays, Saturdays during non-class periods

Admission: Free

Note: For the latest opening information, please refer to the link from the Institute “Jomin Bunka Museum” website to the “Museum Commons” Exhibition Hall [Opening Calendar].



Fabrics for Everyday Clothes



Documenting Local Lives

Collection Materials Exhibition

- “Hot Water Bottles” (July 3 - October 14, 2023)
- “Historical Materials Collected by Keizo Shibusawa”
Exhibition related to the Symposium “Researching Historical Materials of the Lifeworld” (November 8, 2023 – February 16, 2024)
- “The History of Oku-Noto and the Institute for the Study of Japanese Folk Culture” (March 5 – May 31, 2024)

Special exhibitions

- “Cloth and Clothing: *Sashiko* Embroidery,” collection of Tsutomu Watanabe (October 11 – November 5, 2023)
- “The Room of a KU Student: A Construction by the Institute for the Study of Japanese Folk Culture” (March 19 – May 11, 2023)

● Please check the website for details regarding past exhibitions and future schedules.



Collection of Historical Documents and Cultural Materials

From the very beginning, in 1921, when Keizo Shibusawa founded the Attic Museum Society, he made it policy to collect materials. For various reasons, the collected materials were subsequently dispersed and stored in several institutions. The Institute aims to pass on to the next generation the materials inherited from the Attic Museum and collected after it was attached to Kanagawa University by preparing them for use in research and exhibitions.

The wide-ranging collection of the Institute is being opened to the public as it becomes collated and is available for viewing for research purposes, publication for special use, and loan for exhibitions.

Historical Documents

A group of historical documents focusing on the early modern and modern periods. In the original archives, there are historical documents related to daily life collected by the Attic Museum, as well as a set of documents related to the fishing industry and fishing villages, including the documents of the family of Shiro Futagami. Other microfilmed photocopies of historical documents made in various regions are included in our collection.



Futagami Family Collection

Hand-Copied Texts

The fishing and fisheries-related manuscripts were copied at the Tsukishima Branch on commission from the Fisheries Agency from 1949 to 1955. These hand-copied documents cover all of Japan and were compiled into around 1,900 volumes.



Hand-Copied Texts

Documents of the Former ISJFC Foundation

Information on the operation of the former foundation covering over 100 years from its inception as the Attic Museum Society.

The documents include records transferred from the former foundation, papers by Shuhei Uno and in the Takeharu Kawaoka Folklore Studies Collection, and documents pertaining to the Shibusawa Foundation for Ethnological Studies.

Paintings

Pictorial materials collected and copied at the Attic Museum. The Institute collection includes catfish woodblock prints, “*Koka Shunju*” (Cultivation Throughout the Year), illustrations of farm implements, and “*Shiki Kosaku Kodomo Yugi Zukan* (Scroll of Cultivation and Children’s Play over Four Seasons)”. The museum also has a collection of about 800 *ebiki* (pictopedia) images copied by Deigyū Murata.



“*Shiki Kosaku Kodomo Yugi Zukan*” (partial image)

Photographs and Films

● Attic Photos and Attic Films

8,000 still pictures and films taken by Keizo Shibusawa and other members of the Attic Museum, mainly recording folk customs of Japan and its overseas territories in the early Showa Period.



Attic Museum photograph of people bearing a portable shrine (Korea/1936; catalog number: ア-61-12)



Attic Film *Tanihama*, February 1935.

● Yokohama Pictures

Colored photographs depicting the city of Yokohama around the time when its port was opened to foreign countries.

Folk Materials

Materials Produced for ISJFC

These materials are produced in line with research themes. Serving as records of production techniques made by artisans, the materials include forged iron samples, a collection of work clothes produced in a one-fifth scale of the original size, and *wasen* (Japanese boat) models by shipbuilder Kondo Tomoichiro.

Materials Collected by ISJFC

These are *mingu* that were actually used and include materials related to clothing, agriculture, fishing, daily life, livelihood, and religious beliefs. The collection includes approximately 2,000 items of *mingu* from merchant families in Tsukui-gun, Kanagawa Prefecture, as well as the Yuto Haneda Collection (2,473 small *ema* votive plaques), the Tameichiro Yonezu Collection (approximately 2,000 pieces of handicraft made using small cuts of cloth), and the Tsutomu Watanabe Collection (1,283 pieces including Tohoku and Ainu clothing).



Chart of production process of forged steel products

1/10 scale model of a *wasen* (traditional Japanese ship); this is a cargo ship known as a *higaki kaisen* (made by Tomoichiro Kondo).



Small *ema* votive plaque (to abstain from alcohol and gambling; template)



Kogire kiribame-zaiku rice bag

Digital Browsing of Materials in the Collections

Kanagawa University Digital Archive

A part of our collections is available on our website. Bibliographic information on theses, historical documents, and photo/video materials are available for browsing. Some of the publications of Attic Museum and Foundation are also available through links on the Institute's website.



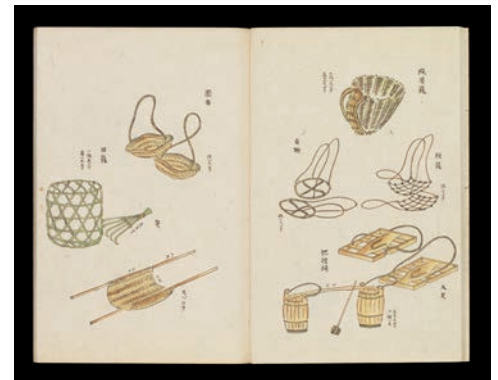
Digital Archive

Digital Collection of Paintings

"*Shiki Kosaku Kodomo Yugi Zukan* (Scroll of Cultivation and Children's Play in Four Seasons)" and all five works of *Paintings of Farm Implements* can be viewed on our website.



Collection of Paintings



Paintings of farm implements in Hiroshima

Library Collection

Books

The original holdings were collected when the Institute was an incorporated foundation. These have been augmented by purchase, exchange, and donation since it was transferred to Kanagawa University and currently number approximately 100,000 titles. Private collections include the Teizo Iyanaga Ancient Japanese History Collection and the Takeharu Kawaoka and Noboru Miyata Folklore Studies Collections. The library holdings of Shibusawa Foundation for Ethnological Studies (*Minzokugaku Shinko Kai*) were also transferred to the Institute when it was dissolved. Note: Bibliographies are searchable on the Kanagawa University Library OPAC.

Serial Publications

Through exchange of bulletins from museums nationwide and journals from various academic societies, the library holds approximately 2,800 titles and 1,715 titles of serials formerly owned by the Shibusawa Foundation for Ethnological Studies.



OPAC Search



Availability



Former collection of the Shibusawa Foundation for Ethnological Studies



The Institute considers it important to communicate its research findings to society at large and actively holds courses as an activity to this end.

Folk Cultural Studies Seminar (*Jomin Bunka Kenkyu Koza*)



The Folk Cultural Studies Seminar has been held annually since 1997 with the objective of stimulating Japanese culture research. Each seminar focuses on a certain theme in the everyday lives, culture, and history of *jomin* through lectures and symposiums.

Practical Training Workshop for Restoration of Historical Documents

The workshop is held alongside the Folk Cultural Studies Seminar to provide training on the three basic steps of historical document restoration work: recording and organizing, repairing (mending and lining), and restoring (trimming and binding). Participants also learn the technique of separating the underlayer of *fusuma* (paper sliding doors).



Mingu Forum

A training class to measure *mingu* artifacts began in 1974 in association with *mingu* research courses. The class took the form of a *mingu* research workshop in 2015 and became a forum in 2016. The forum is held two or three times a year; it is closely coordinated with the publication *Mingu Montbly*, with each forum planned by the editing staff based on a popular theme. Since 2021, videos introducing *mingu* have been posted on YouTube.



● In addition, the Institute's staff members run courses at Kanagawa University's KU Port Square (Kanagawa University Extension Center) in the Minato Mirai area of Yokohama. They have also planned and executed lectures and symposiums jointly with local governments and newspapers in survey areas. These lectures and other events are also introduced on the Institute website.

Seminars Held in FY 2023

27th Folk Cultural Studies Seminar
Centennial Commemorative Project: 100 Years of the Institute for the Study of Japanese Folk Culture
Researching Historical Materials of the Lifeworld
 (December 9, 2023)

- Explanation of aims: Hiromu Okawa
- Keynote Speech
 “The Living World and Reading Historical Documents: Fieldwork in the Disaster Area” Masakatsu Okado
- Report
- “Historical Records of the Fishermen of Uchinoura, Izu Province and the Lifeworld of an Early Modern Fishing Village” Shingo Nakamura
- “Childbirth and Childcare in the Early Modern Period in the Saigyodo-Bunko Collection” Hiroo Sekiguchi
- “Wagyu History and Lifeworld” Takashi Itagaki
- “What We Can See in Early Modern *Shamu Nisshi* Shrine Records” Noboru Hirayama
- General discussion



Venue for the seminar



Commemorative photo of the presenters

27th Folk Cultural Studies Seminar
Training Workshop on Historical Document Restoration
 (March 10-11, 2024)

- 1) Recording and disassembly of damaged historical documents
 - 2) Repair (sewing/back-lining)
 - 3) Restoration (trimming and binding)
 - 4) Hands-on training for peeling off documents used as underlay of folding screens and sliding doors
- Hiroo Sekiguchi, Satoshi Shirouzu, Satoshi Yamaguchi, Satoshi Nakamura, Mariko Hirata



Repair and backing process. Reinforcing historical documents with washi backing

27th Folk Cultural Studies Seminar

- **Mingu Forum 11 (6th video broadcast)**
 “Tokushima Prefectural Museum: Wild Silk”
 Hironori Isomoto (August 3, 2023/Video)
- **Mingu Forum 12 (7th video distribution)**
 “Tokushima Prefectural Museum: Awa Bancha Production Tools”
 Hironori Isomoto (December 5, 2023/Video)



Video broadcast



Wild Silk



Awa Bancha Tea Plantations

● Information on past and upcoming lectures since the first series (1997) is available on the Institute website.

Publications



The first issue of the Institute's journal *Jomin Bunka Kenkyu* (Bulletin of ISJFC) was published in FY2022. In addition, the institute publishes an annual *Rekishi to Minzoku* planned and edited by its staff and regularly publishes *Mingu Monthly* for the purpose of exchanging information on *mingu* research. On occasion, we also publish joint research projects, book series, research reports, and catalogs of materials.

Rekishi to Minzoku (History and Folk Customs)

Since its first issue in 1986, *Rekishi to Minzoku* has been published in book form by Heibonsha. In this publication, the research activities of the Institute are introduced through articles and research notes by members and related researchers of the Institute. Published annually; as of 2024, the total number of issues is 41. This journal will be substantially renewed starting with the 42nd issue in FY2025, and an electronic version will be launched at the same time.

Note: The periodical can be purchased through Heibonsha.



Vol.39



Vol.40



Vol.41

Jomin Bunka Kenkyu (Bulletin of Institute for the Study of Japanese Folk Culture)

This bulletin was first published in March 2023 as part of the 100th anniversary celebration of the establishment of the Institute. Until that time, *Rekishi to Minzoku* served as the Institute's bulletin, but *Jomin Bunka Kenkyu* took over this role and has been published annually. Contributions are solicited from the staff, visiting researchers, and special researchers of the Institute, and each issue provides a forum for the publication of research findings, including peer-reviewed papers, reports on research activities, and short communications on newly found historical materials.

Note: The backnumbers are available on the Kanagawa University Academic Institution Repository.



Vol. 2, 2023 (Feb. 2024)

Mingu Monthly

Mingu Monthly is a subscriber-only magazine published for the purpose of exchanging information on *mingu* research. It is the oldest journal devoted to the study of material culture with a focus on *mingu*. As of July 2024, the magazine is on its 676th issue (Vol. 57, No. 4). In addition, the publication of this journal emphasizes the relationship of the Institute to local history and serves as a focal point for the study of *mingu*. In addition to this journal, in recent years we have been running the *Mingu Forum*, which introduces *mingu* on YouTube.



Inaugural issue



Vol. 57 No. 4

● Back issues of *Rekishi to Minzoku*, *Jomin Bunka Kenkyu* (Bulletin of Institute for the Study of Japanese Folk Culture), and *Mingu Monthly* can be searched on the Institute website or at the Kanagawa University Digital Archive.

Monographs, Research Reports, Catalogues, etc.

100 Shunen Kinen Jigyo Kankobutsu (Centennial Commemorative Project Publications), *Komonjo Shufuku Koza*: Guidebook for the Restoration of Historical Documents, *Jomin Bunka Kenkyu*: Bulletin of Institute for the Study of Japanese Folk Culture 1-2

Kyodo Kenkyu "Setonaikai no Rekishi Minzoku" (Joint research "History and Folklore of Setonaikai"), photograph collection, collection of materials from the Middle Ages, Early Modern Period, folklore studies reports, annals, Collection of Sketches) 1-10

Kyodo Kenkyu "Brazil Nihonjin Nyushokuchi no Rekishi Minzokugakuteki Kenkyu" (Joint Research Project: Social History of Japanese Colonies in Brazil), History and Folklore, Architecture Edition 1-2

Okunoto to Tokikunike (Tokikuni Family in the Okunoto Area), 3 volumes of document collections and survey reports and 2 volumes of research articles based on a coordinated field program.

Jomin Shiryo Soshō (Japanese Folk Document Monographs), nos.1-2.

Kanagawa Daigaku Nihon Jomin Bunka Soshō (Japanese Folk Culture Monographs), nos.1-7.

Kokusai Jomin Bunka Kenkyu Soshō (International Center for Folk Culture Studies Monographs) 1-15

Kanagawa Daigaku Nihon Jomin Bunka Kenkyujo Shozo Shiryo Mokuroku (Catalogue of Material Collection of the Institute for the Study of Japanese Folk Culture, Kanagawa University) 1-6

Kanagawa Daigaku Nihon Jomin Bunka Kenkyujo Chosa Shiryo Mokuroku (Catalogue of Materials from Field Studies by the Institute for the Study of Japanese Folk Culture, Kanagawa University) 1-13

Wajima-shi Machino-chiku Kankei Komonjo Mokuroku (Catalogue of Historical Documents of Machino District, Wajima City) 1-5

Suisan Sogo Kenkyu Senta Shozo Komonjo Mokuroku (Catalogue of Historical Documents Held by the Fisheries Research Agency) 1-11

Suisan Kenkyu/Kyoiku Kiko Shozo Komonjo Mokuroku (Catalogue of Historical Documents Held by the Fisheries Research and Education Agency) 12-14

Kanagawa Daigaku Nihon Jomin Bunka Kenkyujo Chosa Hokoku (Reports on Field Studies by the Institute for the Study of Japanese Folk Culture, Kanagawa University) 9-24

Kokusai Jomin Bunka Kenkyu Kiko Kyodo Kenkyu (shorei) Chosa Hokokusho (International Center for Folk Culture Studies Joint Research Reports; incentive project) 25-30

Kanagawa Daigaku Nihon Jomin Bunka Kenkyujo Nenpo (Annual Reports of the Institute for the Study of Japanese Folk Culture, Kanagawa University) 2014-2025

Kanagawa Daigaku Nyumon Text Series (Kanagawa University Introductory Text Series, History and Folklore Studies Primer) 1

DVD&Book: *Yomigaeru Minzoku Eizo* (Reviving Folk Image)

Umi to Hinogyomin (Ocean and Non-farming People) with CD of lecture

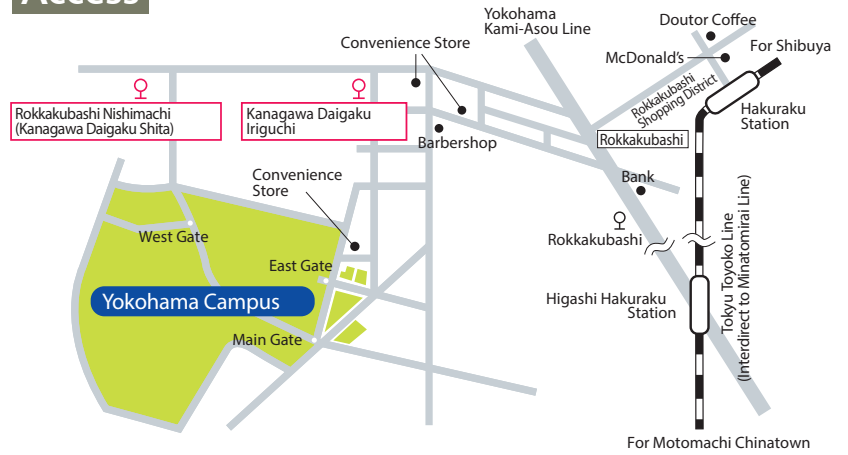
Komonjo no Hoshu to Toriatsukai (Repair and Handling of Historical Documents)

Emakimono ni Yoru Nihon Jomin Seikatsu Ebiki (Pictopedia of Everyday Life in Japan from Picture Scrolls), New Version, 5 volumes.

Video "Futagami-jima (Futagami-jima Island)" 1-3



Access



INSTITUTE FOR THE STUDY OF JAPANESE FOLK CULTURE KANAGAWA UNIVERSITY

Open: Mondays–Fridays 9:00–16:00

Closed: Saturdays, Sundays, national holidays, other days when the University is closed (including summer and winter vacation)

URL: <http://jominken.kanagawa-u.ac.jp/en/>

Jomin Bunka Museum

Open: Mondays–Saturdays 10:00–17:00

*However, closed Saturdays during non-class periods

Closed: Sundays, National holidays *Except for class days
University holidays, Saturdays during non-class periods

The Research Center for Nonwritten Cultural Materials

<http://himoji.kanagawa-u.ac.jp/english/>

Kanagawa University Digital Archive

<https://www.kanagawa-u.ac.jp/research/digitalarchive/>

Address: 3-27-1 Rokkakubashi, Kanagawa-ku,
Yokohama-shi, Kanagawa 221-8686 JAPAN

Telephone: +81-(0)45-481-5661

Email: jomin-office@kanagawa-u.ac.jp



Instagram



Facebook



X



YouTube

November 2024